

## Installing the Luminex 100 IS USB Device Drivers

If you are connecting a Luminex IS device to a computer that has not previously been connected to a Luminex instrument. Or for some other reason your computer does not have installed the device drivers required for USB connectivity the steps below outline the procedure for installing a Luminex 100 IS USB connection.

**Step 1.** To repair a previously installed IS USB connection, first select the windows control panel (figure 1) otherwise proceed directly to step 6 to install the USB device drivers.

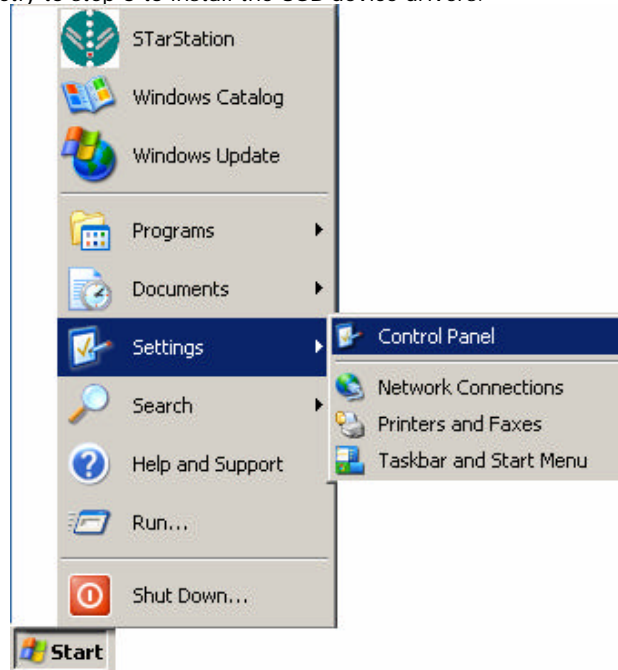


Figure 1

**Step 2.** Next select the System applet from the control panel (figure 2).

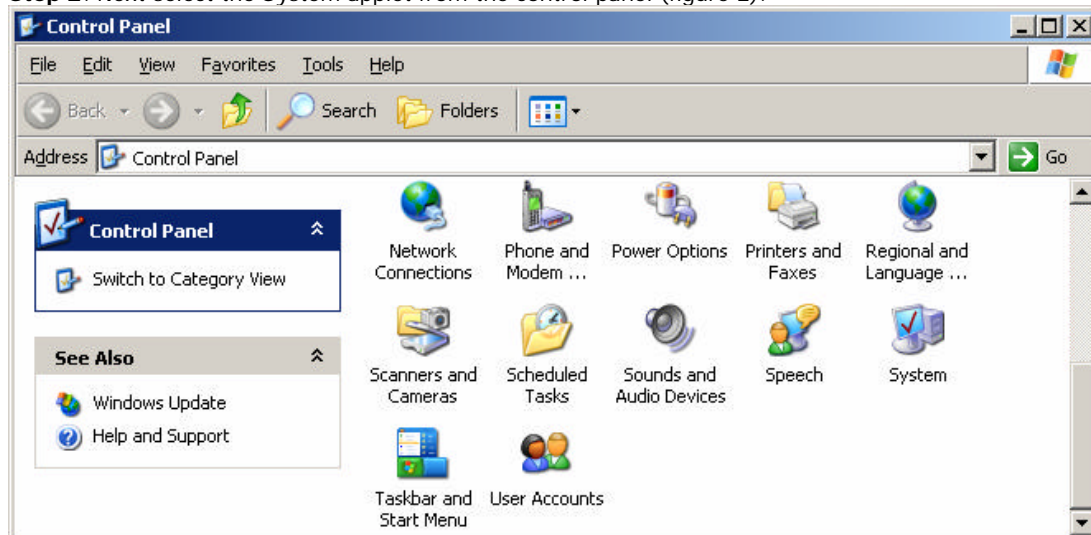


Figure 2

**Step 3.** When the System Properties Dialog is displayed (figure 3) select the hardware tab and press the button labeled Device Manager.

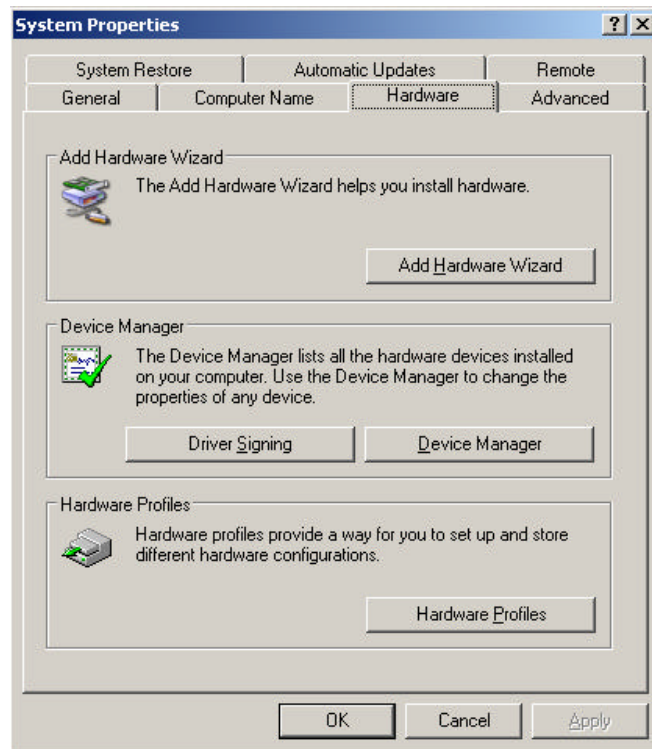


Figure 3

**Step 4.** When the Device Manager is displayed (figure 4) there should be a LX100 entry in the device list. If there is no device listed check that the USB connection from the Luminex 100 is connected to a USB port on your computer and that the instrument is switched on, then right-mouse click on root item in the tree control (LuminexDellXP in figure 4) and select the Scan for Hardware Changes item. If following these checks there is still no entry in the Device Manager for LX100 jump to step 6 to install the device drivers.

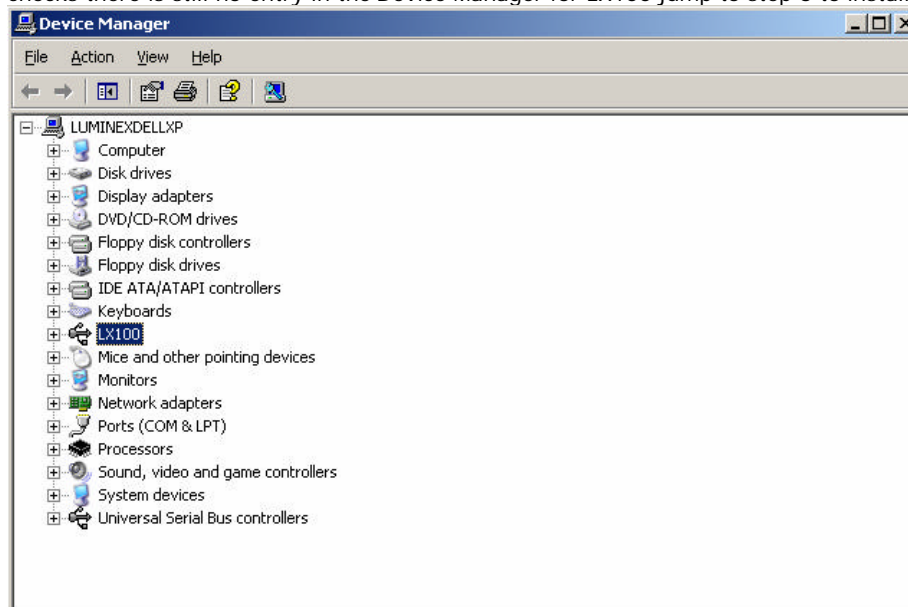


Figure 4

**Step 5.** Right Click the LX100 item in the list and select properties, figures 5 and 6 show example dialogs indicating a correctly installed and functioning Luminex 100. If the device is not working properly proceed to step 6 to install the device drivers.

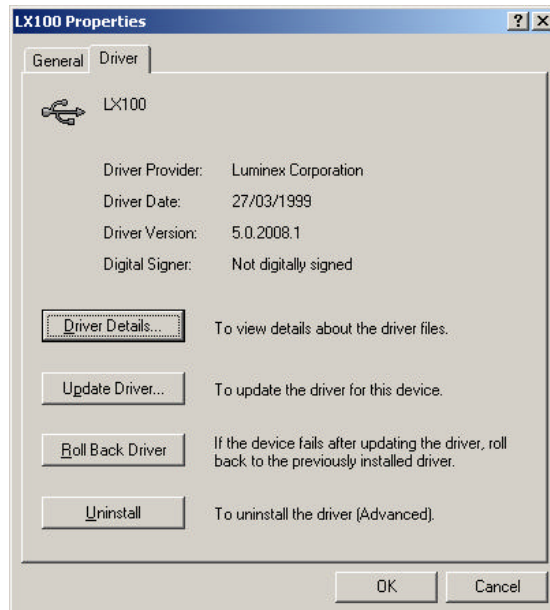


Figure 5

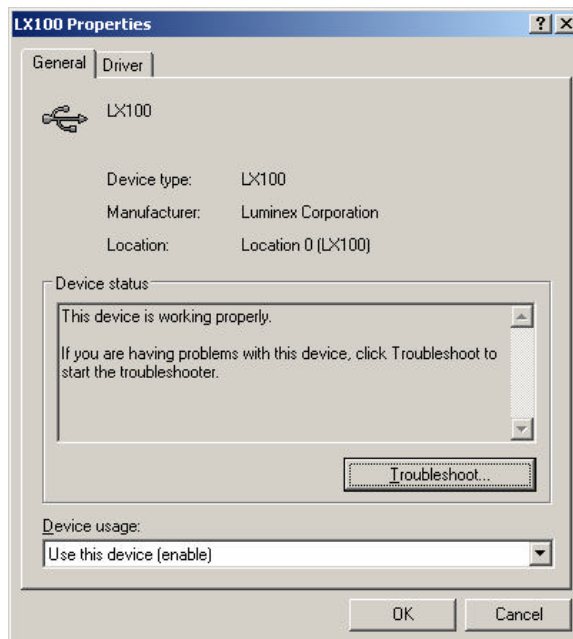


Figure 6

**Step 6.** Power up the Luminex 100 and connect the USB cable to the USB port of your computer. Once the USB cable is connected your computer should detect the new hardware (figure 7) and automatically start the Found New Hardware Wizard (figure 8).



Figure 7

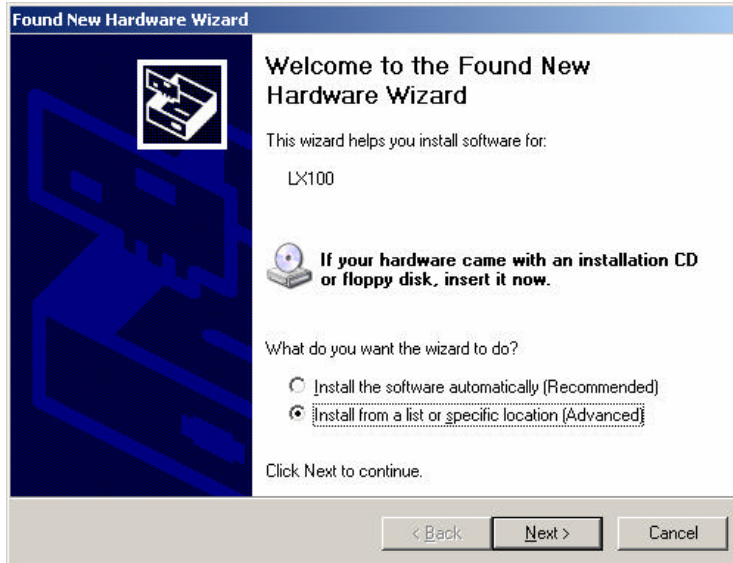


Figure 8

**Step 7.** On the first page of the Found New Hardware Wizard select the *Install from a list or specific location* option, and press the Next button.

**Step 8.** On the second page of the hardware wizard (figure 9) check the *include this location in the search tick box*.

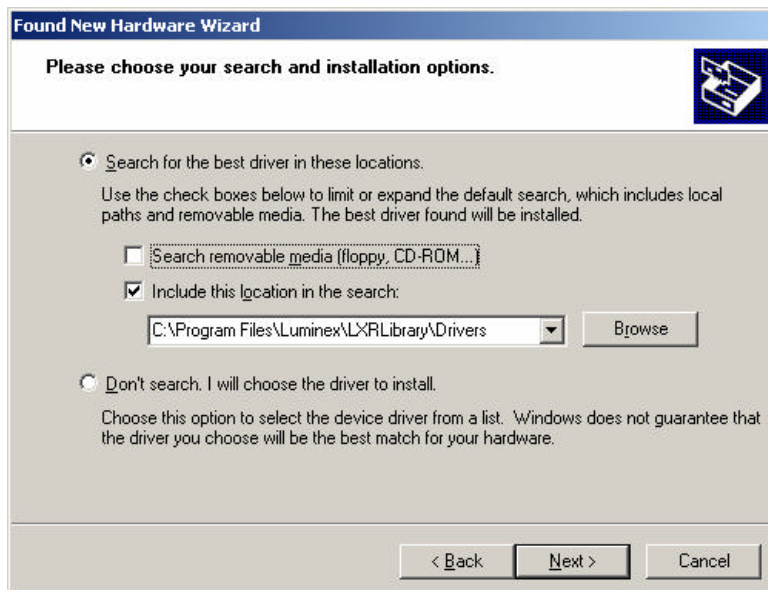
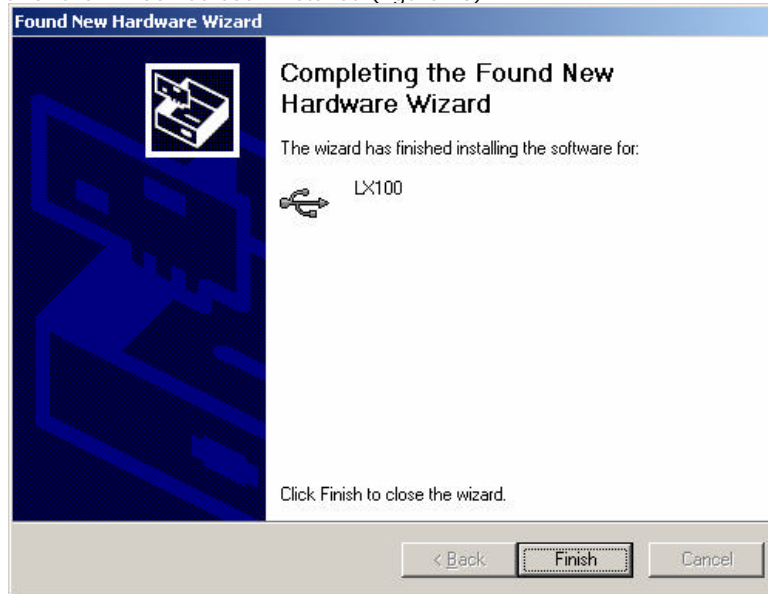


Figure 9

**Step 9.** The file required for installation of the LX100 device driver is called LX100.sys and is installed as part of the Luminex Library (for Luminex Library version 1.1.71 and above). This file is located in the Program Files\Luminex\LXRLibrary\Drivers directory. click the browse button and navigate to this location, then Click the Next button to begin the device driver installation

**Step 10.** The Installation process should complete and the hardware wizard should inform you that the software required for the LX100 has been installed (figure 10).



**Figure 10**