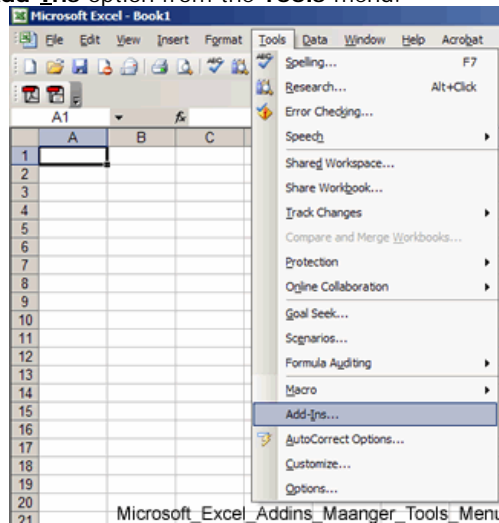


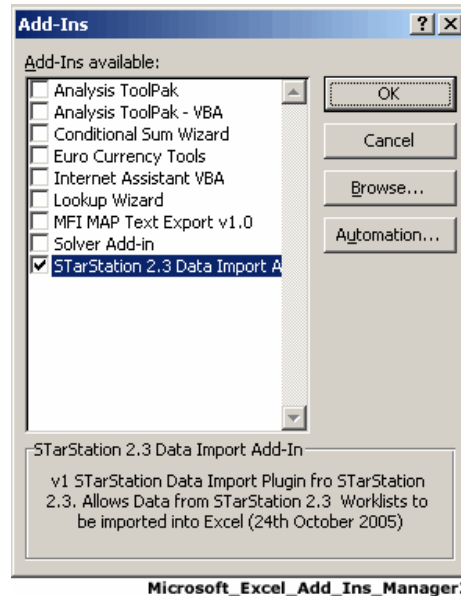
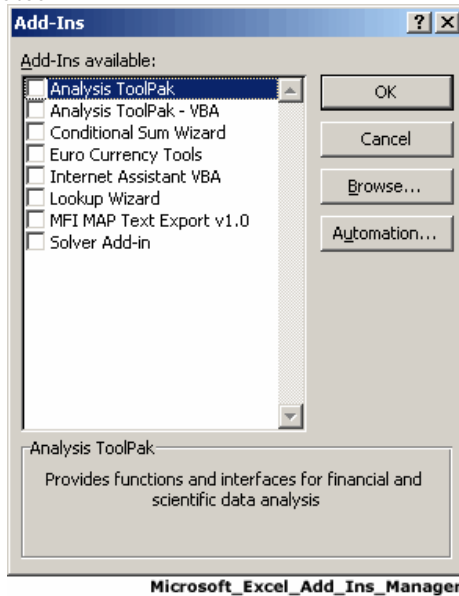
Importing STarStation Data Into Microsoft Excel

Note: The STarStation Excel Plugin supports Microsoft Excel version 2000 and above.

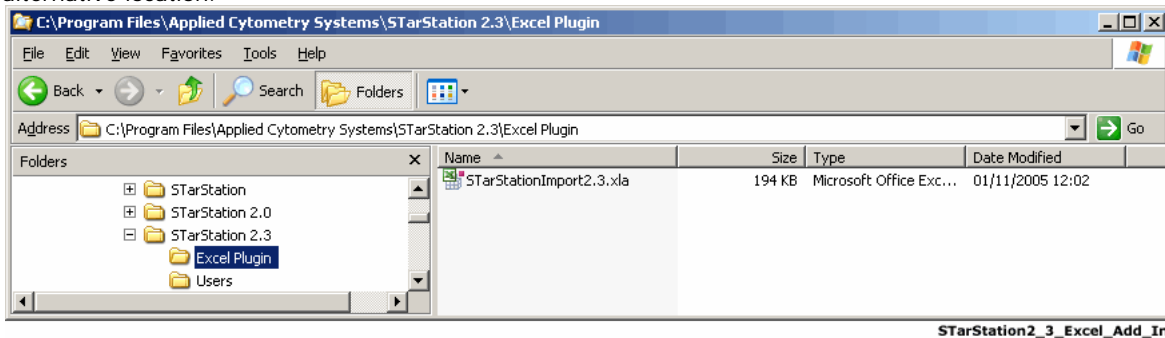
1. First check to see if the STarStationimport add-in is present within the Excel add-in manager.
2. Start Excel and select the **Add-Ins** option from the **Tools** menu.



3. When the Add-Ins dialog is displayed check that the STarStation 2.3 Data Import Add-in has been added and activated.

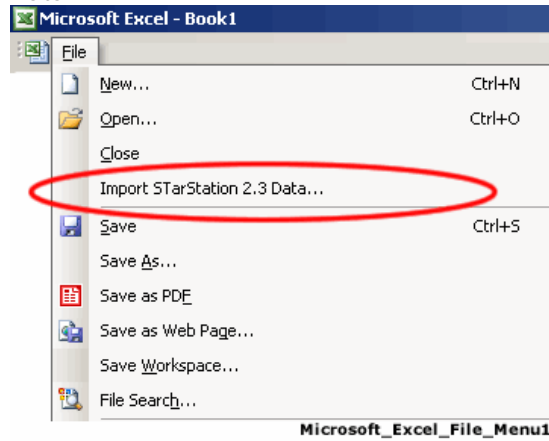


4. If the STarStation 2.3 Data Import Add-in is not present in the list, select the **Browse** button and select the STarStationimport2_3 add-in. The add-in file, **STarStationimport2_3.xla** is located in the Excel Plugin folder in the directory in which STarStation was installed. This will be the **C:\Program Files\Applied Cytometry Systems\STarStation2.3\Excel Plugin** directory unless STarStation was installed to an alternative location.



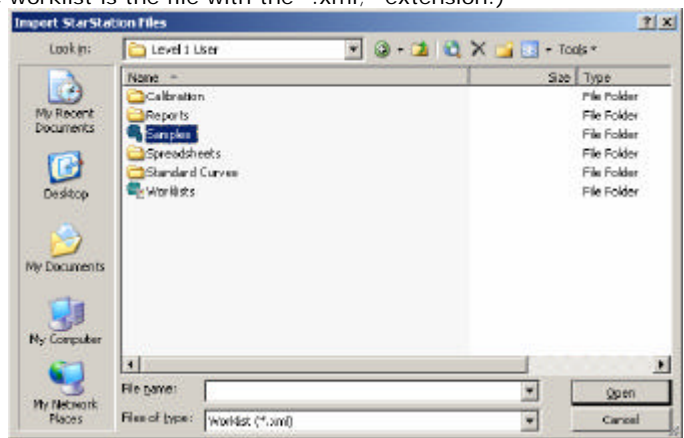
5. Once the add-in is installed you should have an extra option available on the Excel File menu (see figure below).

a) **Import STarStation 2.3 Data...**



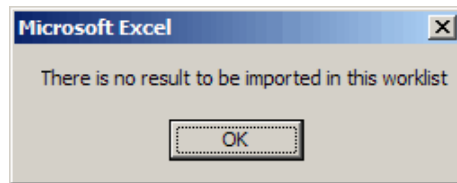
6. To import STarStation Worklist Data Select the **Import STarStation** option from the **File** menu.

7. The **Import STarStation Files** Dialog is displayed. Navigate to the samples directory and select the worklist of choice. (The worklist is the file with the ".xml;" extension.)



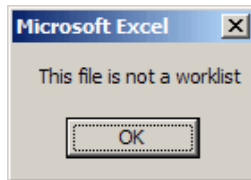
Note: Only worklists within a STarStation Samples directory **that have been saved in the Reports Tab of STarStation** will have the required data in them.

If you attempt to open up a worklist with that has not been saved in the Reports Tab, you will see the following prompt.



Excel_Import_Error

If you attempt to import data from an xml file that is not a STarStation worklist, Excel may start the Text Import Wizard or you will be notified that the file you selected was not a STarStation worklist (see the figures below).



Microsoft_Excel_File_Not_A_Worklist

The Text Import Wizard may also start if you attempt to import a STarStation worklist using the **Open** option rather than the **Import STarStation...** option.

If this happens, select the **Cancel** option from the Text Import Wizard and then select the **Import STarStation...** option from the File menu and navigate to the STarStation worklist you wish to import data from.

Once the data has been successfully imported the Excel workbook should look something like the one shown in the figures below.

