

STarSystem 2.3 Installation Quick Guide

PD 035-328



1. Ensure that you have Windows administrative rights before commencing install.

2. Installing STarStation Version 2.3.

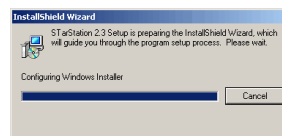
Place the STarStation CD into the CD drive of the PC.

The installation process should begin automatically.

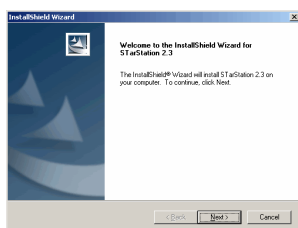


1. Splash Screen is displayed

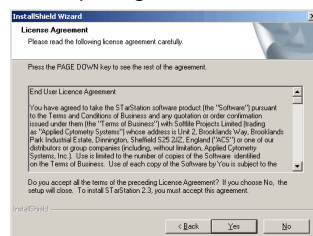
If the STarStation installation splash screen is not displayed select the setup.exe file from the root directory of the CD.



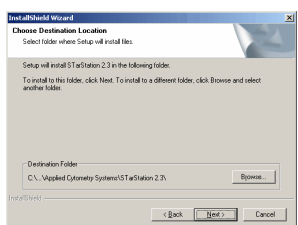
2. Preparing for Installation



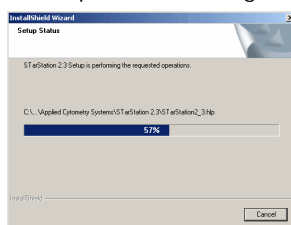
3. Welcome Screen, Press **Next**



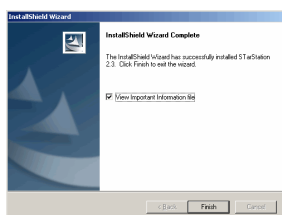
4. Read and accept the license agreement



5. Select where to install STarStation



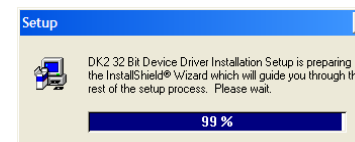
6. Files are copied to the PC



7. Installation Completes

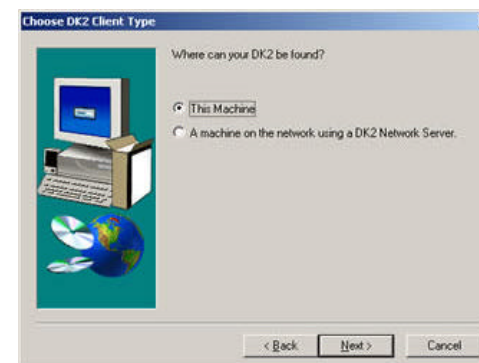
3. Installing the Romlock Drivers.

When STarStation installation is completed, install the DESkey Romlock drivers from the **Setups/DESKey Drivers** folder on the CD (dk2wn32.exe file). If installing a demo version of STarStation or you do not have access to a STarStation Romlock proceed to step 6.



When prompted to choose the client type, choose the default option (This Machine). Click **next** to Continue.

Note: If there are older versions of the DK2 Romlock drivers installed on your PC, at this point you will be prompted to uninstall them. If this occurs select yes to uninstall.



Connect a STarStation System Control or Analysis-Only Romlock to the parallel/USB port of the PC.

Users with an Analysis-Only network Romlock Server will require to network the PC and start the DESkey Romlock Server service to confirm configuration of the Romlock client software.

4. Installing the Luminex Runtime (LX Service) Component.

If the PC already has Luminex IS 2.3 software installed or the STarStation installation is for an analysis-Only package proceed to the next step.

If installing onto a system which does not have Luminex IS 2.3 Software installed, it is necessary to install the LXR component which STarStation requires for communication with the system hardware. The LXR runtime installation program is located in the **Setups/LX Runtime Install** folder of the STarStation 2.3 Installation CD.

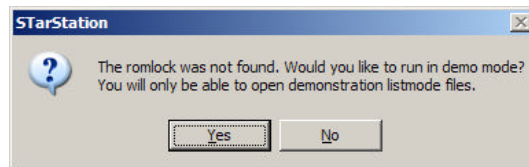
STarSystem 2.3 Installation Quick Guide

PD 035-328



5. Launch STarStation.

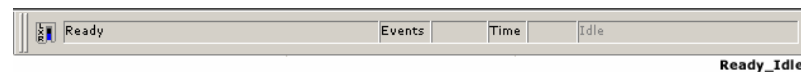
Confirm that the Romlock is detected correctly the warning message below is only displayed if the Romlock is not attached or the Romlock drivers are not installed.



Login using the demo level3 user account: Password "demo level3".



Confirm that STarStation correctly detects the system components. The Instrument status bar should display the states "**Ready**" and "**Idle**".



6. Setup Excel Plugin and Additional Utilities.

To setup the STarStation Excel Plugin component refer to document PD 035-315 *The STarStation Excel Plugin.pdf* for further details.

The Setups folder on the STarStation installation CD contains the Adobe Acrobat Reader version 6.0 setup file. Adobe Acrobat Reader is required for viewing the STarSystem User Information Pack pdf documents.

Note: Prior to attempting data acquisition for the first time you **MUST** perform a calibration in order to correctly initialise the LX Service. Also ensure that both the Sample Probe height and Sheath Delivery Pressure have been verified.