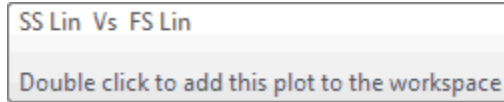


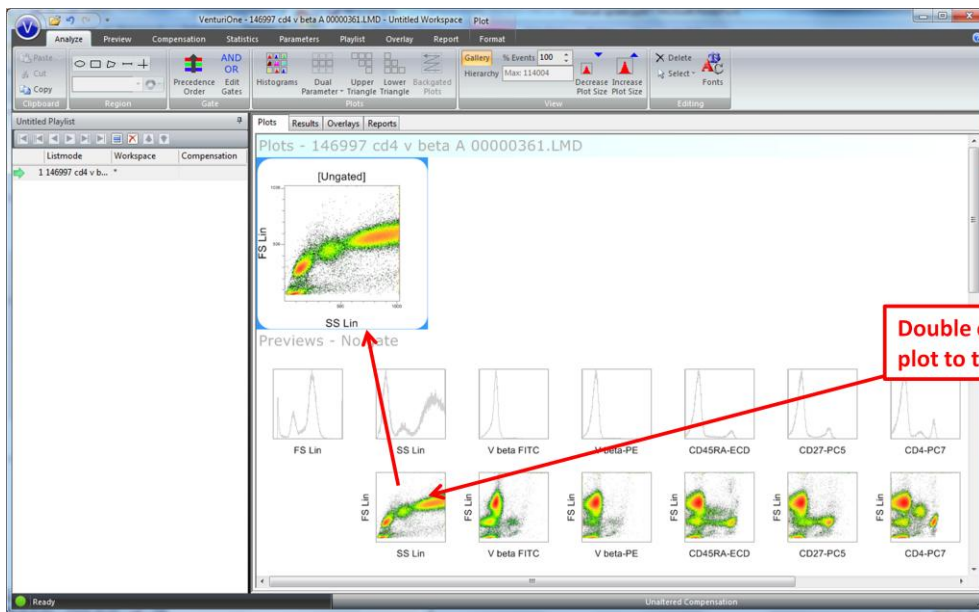
## Add Plots to the Plots Area

You can select plots from the **Previews** area to add to the **Plots** area for further analysis.

When the mouse is over a plot in the preview area, the following tooltip is displayed:



If you double click the plot it will be added to the **Plots** area.



Clicking the **Add** button at the end of a row will add that entire row of plots to the **Plots** area.

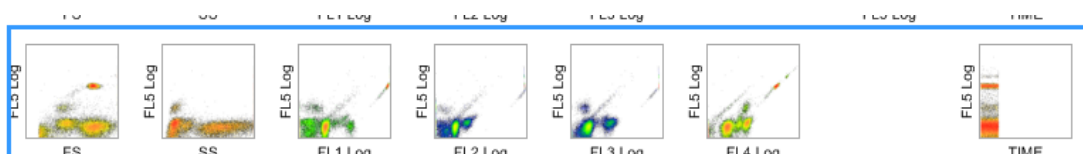


Clicking **the** Add button at the bottom of a column will add the entire column of plots (excluding histograms) to the **Plots** area.

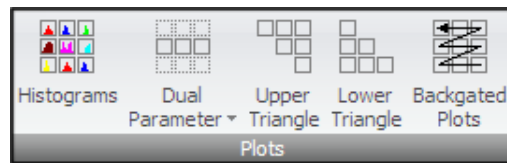


Positioned at the bottom right corner of the **Preview** area is a split button which can add either the upper right triangle or lower left triangle of plots to the **Plots** area, depending on whether the top or bottom button is clicked.

When the mouse is hovered over an **Add** button the plots that will be added when the button is clicked become highlighted in a blue outline:



You can also add plots via the **Plots** group on the **Analyze** tab of the **Ribbon**.

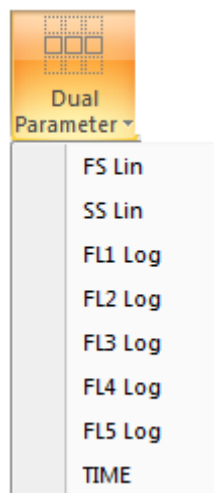


### Histograms Button

Click the **Histograms** button to add all the single parameter histogram plots displayed in the **Previews** area. The plots are gated with the same gate as the preview plots. All the added plots are color-coded to illustrate the gating applied to the **Previews** area.

### Dual Parameter Button

Click the **Dual Parameter** button to display a drop-down list of available parameters, as illustrated in the below:



Select a parameter from the drop-down list to add all the dual parameter combinations against this parameter to the Plots area. The selected parameter is fixed as the y-axis. The plots are gated with the same gate as the preview plots. All the added dual parameter plots are color-coded to illustrate the gating applied to the **Previews** area.

### Upper Triangle Button

Click the **Upper Triangle** button to add all the dual parameter plots, displayed within the upper right triangle of the **Previews** area. All the added dual parameter plots are color-coded to illustrate the gating applied to the **Previews** area.

### Lower Triangle Button

Click the **Lower Triangle** button to add all the dual parameter plots, displayed within the lower left triangle of the **Previews** area. All the added dual parameter plots are color-coded to illustrate the gating applied to the **Previews** area.

## Backgated Plots

When you select the **Backgated Plots** button the software will assess the gate equation of the currently selected plot and identify the regions and parameters involved. The software then creates new plots with the parameters used by the regions within the gate equation, and gates these plots on the gate equation of the currently selected plot.

## Selection of Parameters for Display

If the **Previews** area does not display the required parameters you can selected or deselect parameters from those present on the **Parameters** tab of the **Ribbon**.