

Changing Fonts

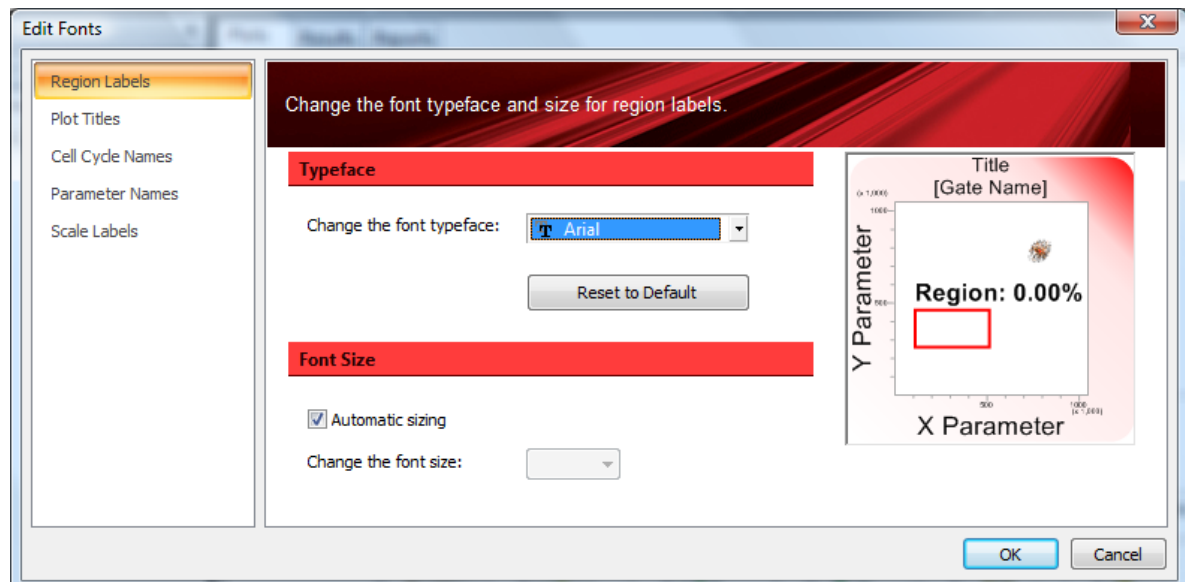
When you create a new **Workspace** the VenturiOne software uses as the typeface and size for plot titles, parameter names, axis scales, cell cycle names, region labels and statistics the default options specified in the **VenturiOne Options** dialog. You can access the **VenturiOne Options** dialog from the **VenturiOne Menu**.

You can change the font typeface and size for the plot titles, parameter names, axis scales, cell cycle names, region labels and statistics in the current **Workspace** in the **Edit Fonts** dialog.

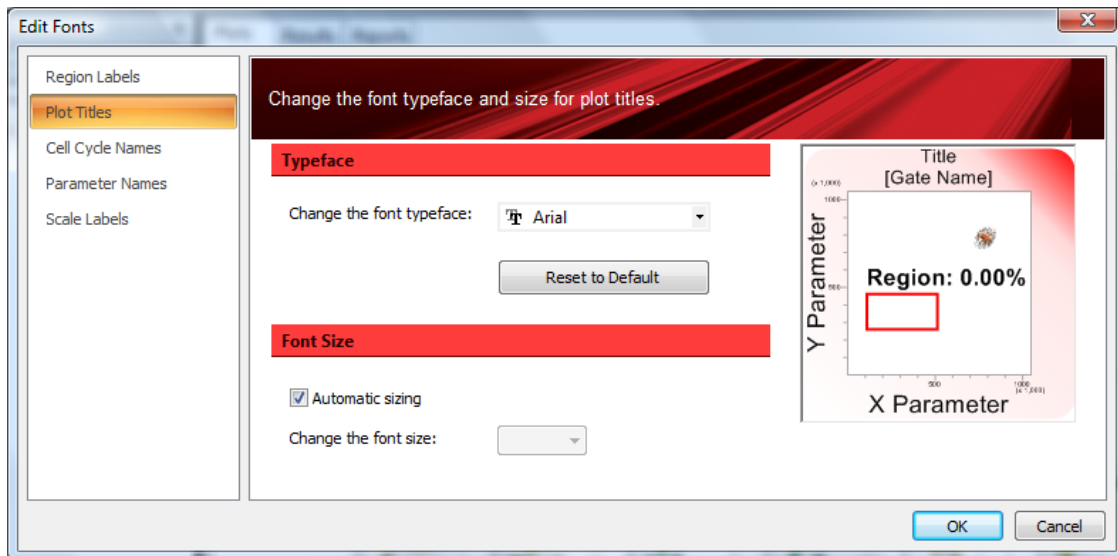
To launch the **Edit Fonts** dialog click the **Fonts** button in the **Editing** group of the **Analyze** tab of the **Ribbon**.

The **Edit Fonts** dialog has several pages. You can navigate between them by clicking on the options on the left hand side of the dialog. The currently displayed option is highlighted. The plot preview on each page displays how the selected typeface and size will look on plots.

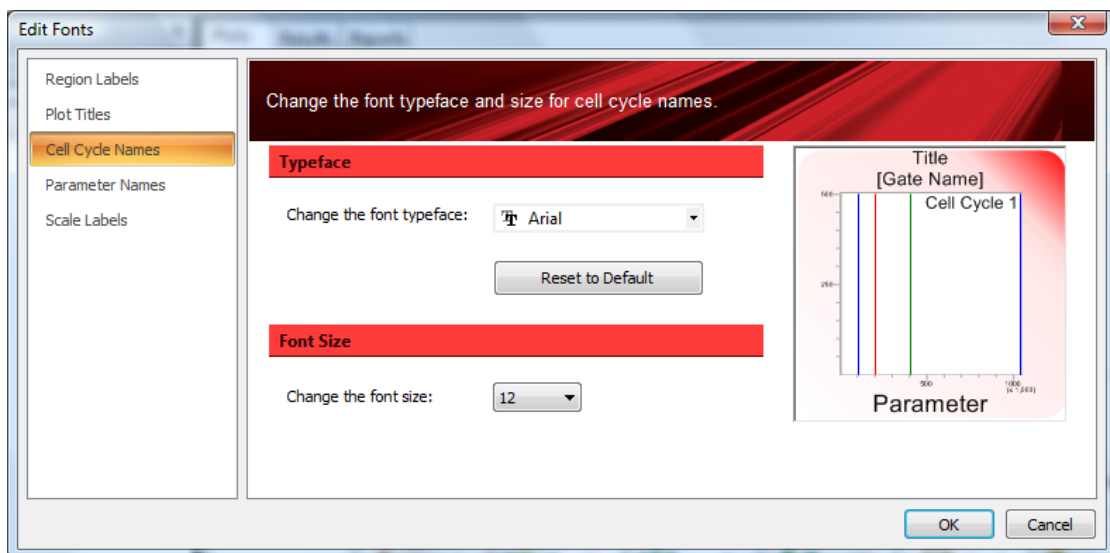
Select the **Region Labels** option on the left to display the **Region Labels** page. The **Region Labels** page allows you to specify the font typeface and size for text used for region labels.



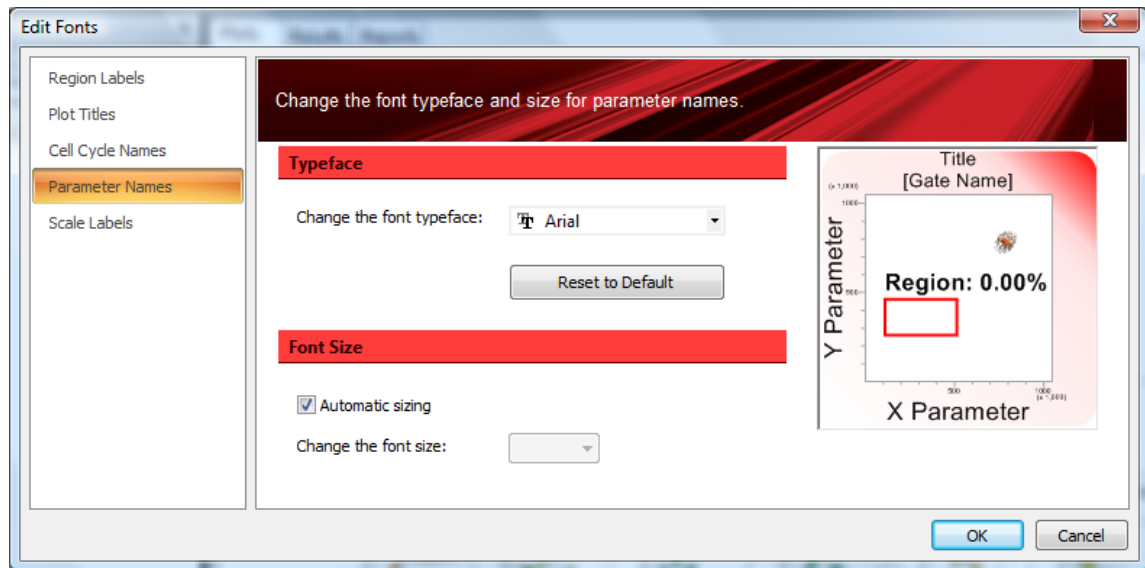
Select the **Plot Titles** option on the left to display the **Plot Titles** page. The **Plot Titles** page allows you to specify the font typeface and size for text used for plot titles.



Select the **Cell Cycle Names** option to display the **Cell Cycle Names** page. The **Cell Cycle Names** page allows you to specify the font typeface and size for text used for cell cycle names.



The **Parameter Names** page is displayed if you select the **Parameter Names** option. The **Parameter Names** page allows you to specify the font typeface and size for text used for X and Y parameter names on plot axis.



On each of the above pages when the dialog is launched the **Change the font typeface** is populated with the current font for the specific text item. The drop-down list contains all font typefaces available on the system. You can select a typeface from the drop down list. If you start typing in the field auto-complete (also known as predictive text) is applied.

Pressing the **Reset to Default** button will reset the typeface for the specific text item to its default from **VenturiOne Options** dialog.

When the **Automatic sizing** check box is selected the size of the font is determined automatically by the software. Note that **Automatic sizing** option is not available on the **Cell Cycle Names** page.

De-select the **Automatic sizing** check box if you would like to specify the size for the specific text item. The **Change the font size** control becomes enabled. You can then select an available size from the list. If you start typing in the field auto-complete (also known as predictive text) is applied.

The **Scale Labels** page is displayed if you select the **Scale Labels** option. The **Scale Labels** page allows you to specify the font size for text used for scale labels. The three sizes available are **Small, Medium** and **Large**.

