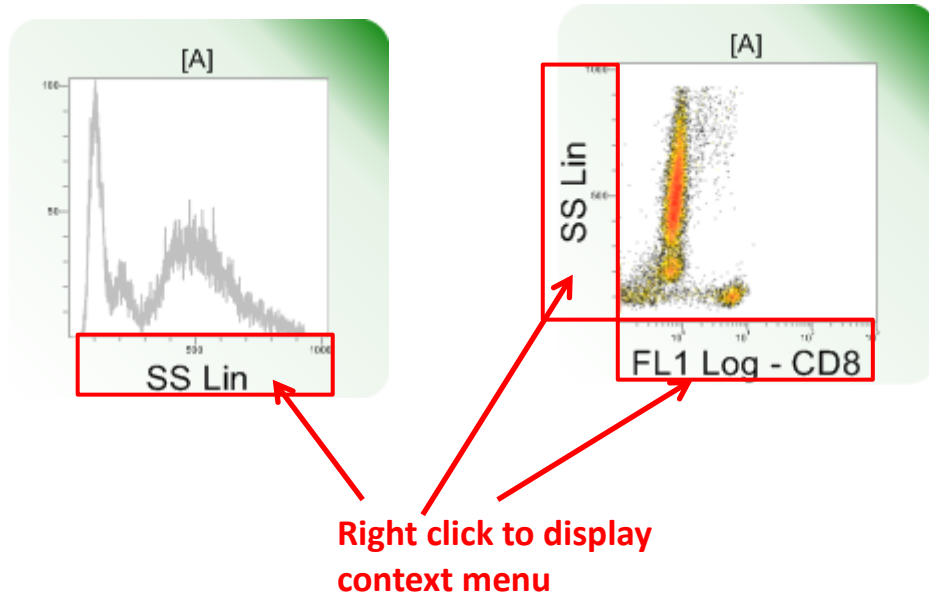
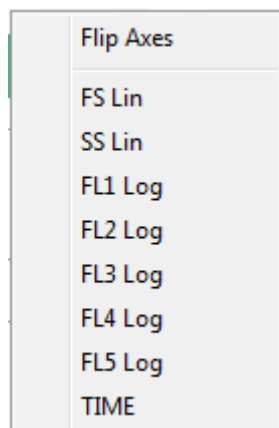


Change Plot Parameters

VenturiOne provides functionality for changing the parameters of the plots in the **Plots** area. You can right click anywhere in the area marked by the red rectangles as indicated in the figure below:



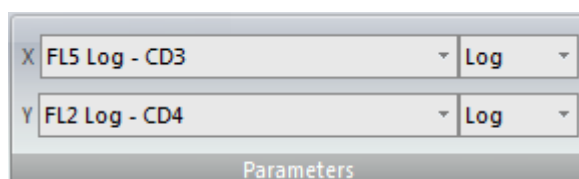
A context menu is displayed allowing you to select a different parameter:



The context menu contains all the parameters currently selected on the **Parameters** tab of the **Ribbon** and the option to 'Flip Axes' (disabled for histogram plots).

Double clicking in the area marked by the red rectangles launches the **Parameter Properties** dialog.

Alternatively use the **Parameters** options of the **Home** tab to change the parameters of selected plots.



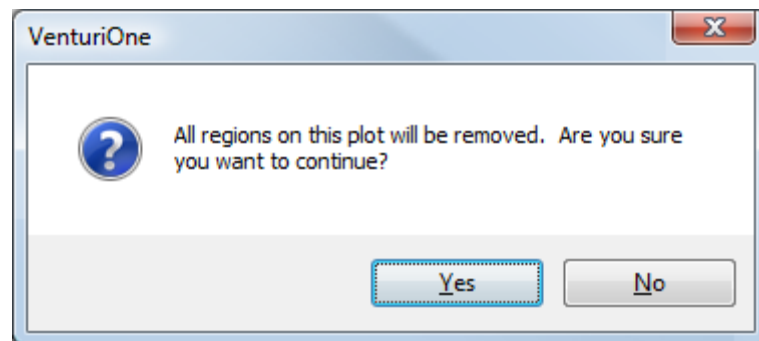
Change a Parameter

When a different parameter is selected the plot is updated to use the new parameter. The statistics and report are automatically updated as well.

The following are retained when a parameter is changed:

- Zoom status of the plot
- Smooth settings for histogram plots
- Gating of the plot
- Cell cycle options

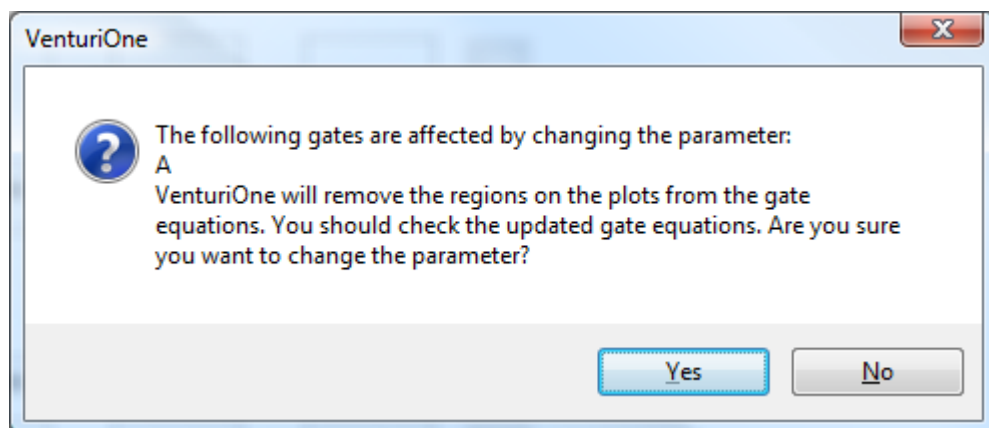
If there are regions on the plot they will be deleted if parameters are changed. If the regions are not used in gate equations the following message is displayed:



Select **Yes** to delete all regions on the plot and change the parameter.

Select **No** to close this message; the parameter will not change; the region will not be deleted.

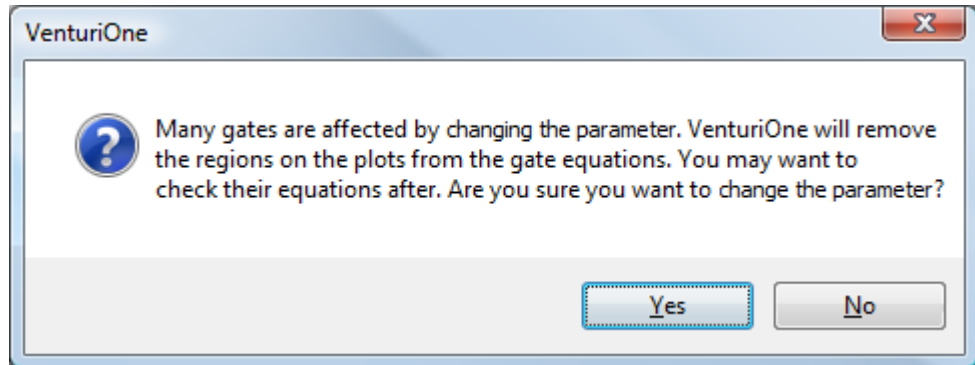
If there are regions on the plot and they are used in gate equations, the following message is displayed when you change a parameter:



Click **Yes** and the listed gates will be removed from all gate equations.

If you click **No** regions or gates will not be deleted and the parameter will not be changed.

When there are more than 10 gates affected, the following message is displayed:



If you click **Yes** the gates will be removed from all gate equations.

If you click **No** regions or gates will not be deleted and the parameter will not be changed.

If the removal of regions will result in any empty gate equations an error message is displayed.

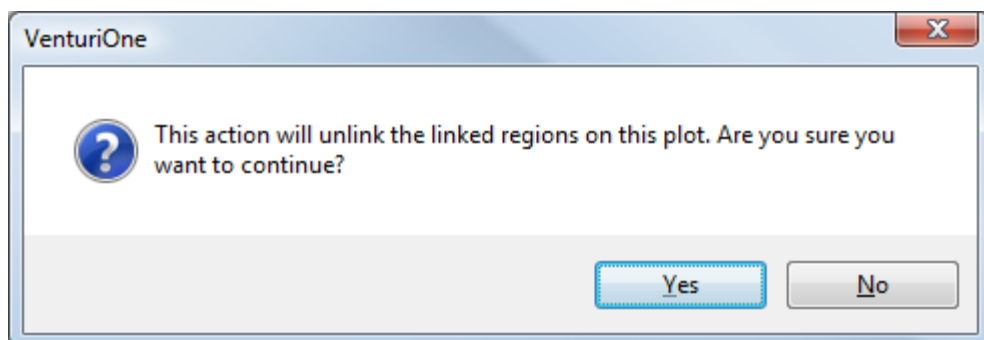
Flip Axes

You can select the **Flip Axes** option from the context menu if you wish to flip the axes of the plot. Any regions on the plot will be retained and flipped as well. Statistics and reports will automatically update.

When flipping a plot containing a quadrant region the quadrant dividers are flipped, but the names of the quadrants are persisted.

Any gate equations using these quadrant regions will be updated if required.

Any linking of regions will be removed if you flip plot axis. You will be warned before any changes are made as follows:



Select **Yes** to unlink the regions and flip the axes.

Select **No** to cancel flipping the axes. The linked regions will be retained.