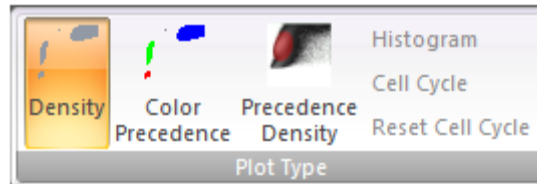


Changing Plot Type

The dual parameter plots in the **Plots** area may be formatted as **Density**, **Color Precedence** or **Precedence Density** plots by using the relevant button in the **Plot Type** group; refer to section **Error! Reference source not found.** for details on these plot types. The **Plot Type** group also contains controls for formatting single parameter plots as **Histogram** or **Cell Cycle**.



Dual Parameter Plot Types

By the default the dual parameter plots in the **Plots** area are Density plots. To change the plot type select one or more dual parameter plots and then click the required option: **Density**, **Color Precedence** or **Precedence Density**.

If different plot types are selected the plot types will not be highlighted but selecting one of the **Plot Type** buttons changes all selected plots to that plot type.

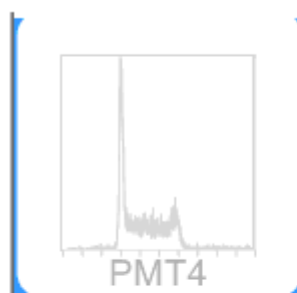
Single Parameter Plot Types

By default the single parameter plots are standard Histogram plots. Single parameter linear data plots can also be displayed as DNA Cell cycle plots by selecting the required plots and clicking the **Cell Cycle** option.

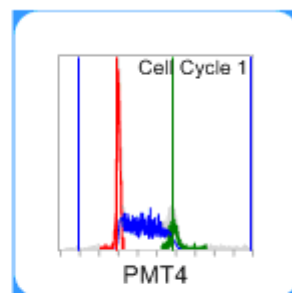
Each Cell Cycle is identified numerically with the title **Cell Cycle #**.

If multiple single parameter linear plots are selected clicking the **Cell Cycle** button activates the cell cycle analysis for all of them.

Below is an example of cell cycle analysis for a single plot:



Plot as a standard histogram



Plot after cell cycle is activated

The **Reset Cell Cycle** button is only enabled when a Cell Cycle plot is selected.

If the G1 and/or G2 markers have been manually adjusted clicking the **Reset Cell Cycle** button returns the markers to their automatically calculated positions.

To change cell cycle plots back to standard histograms select them and click the **Histogram** option.