

## Compensation Group

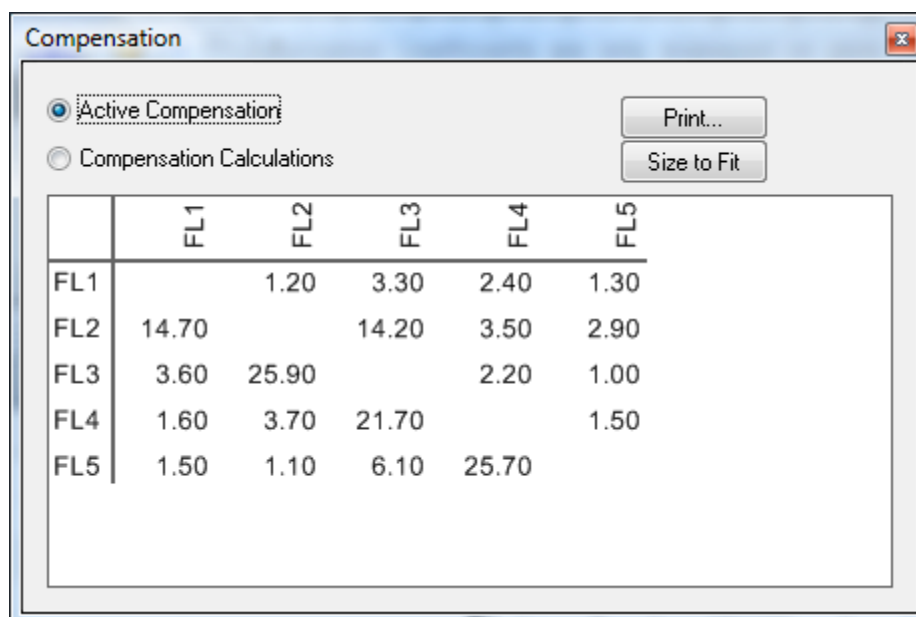
The **Compensation** group has controls for displaying the compensation matrix, for clearing the current compensation matrix and for loading the compensation settings from the current file header.



Some older instruments do not have high enough resolution data to allow analysis time compensation to be performed, so the compensation controls, excluding the **Show Matrix** button, will be disabled for LMD files generated from these instruments.

## Compensation Dialog

Click the **Show Matrix** button to display the **Compensation** dialog. The **Compensation** dialog shows the compensation matrix associated with the current file.



When the **Active Compensation** radio button is selected, the currently active compensation coefficients for each parameter combination are shown in the matrix.

Select the **Compensation Calculations** radio button to display the current calculated compensation matrix.

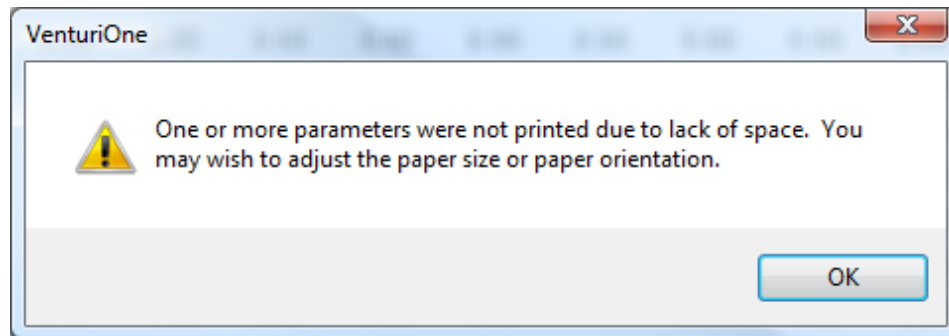
Parameters that are de-selected for display in the **Previews** area are not displayed in the matrix.

Click the **Print** button if you would like to print the compensation matrix.

The default font size for printing the matrix is 10 pt.

If the matrix does not fit in the printing area the font size for the print out of the matrix will be reduced; if the minimum font size is reached and the matrix still cannot fit in the printing area the printout switches layout (from portrait to landscape or vice versa) and the fitting procedure is applied again.

If the matrix still cannot fit, the following message is displayed at the end of printing:



Selecting OK closes the message; the printout of the matrix is cropped.

Click the **Size to Fit** button to re-size the **Compensation** dialog to fit the size of the current matrix; this is restricted by the Screen size of your monitor.

When a new LMD file is opened the matrix automatically re-sizes to fit the new compensation values.

### **Clear Compensation**

Click the **Clear Compensation** button to clear the active compensation; all coefficients in the currently active matrix will be reset to 0.00%. This action will not clear the calculated compensation matrix stored in memory.

The **Clear Compensation** button is only enabled when a compensatable LMD file is loaded in the **Workspace**.

### **Load Compensation From Headers**

Click the **Load Compensation From Headers** button to retrieve the compensation matrix from the current LMD file headers and apply it as the active compensation matrix.

The **Load Compensation From Headers** button is only enabled when a compensatable LMD file is loaded in the **Workspace**.