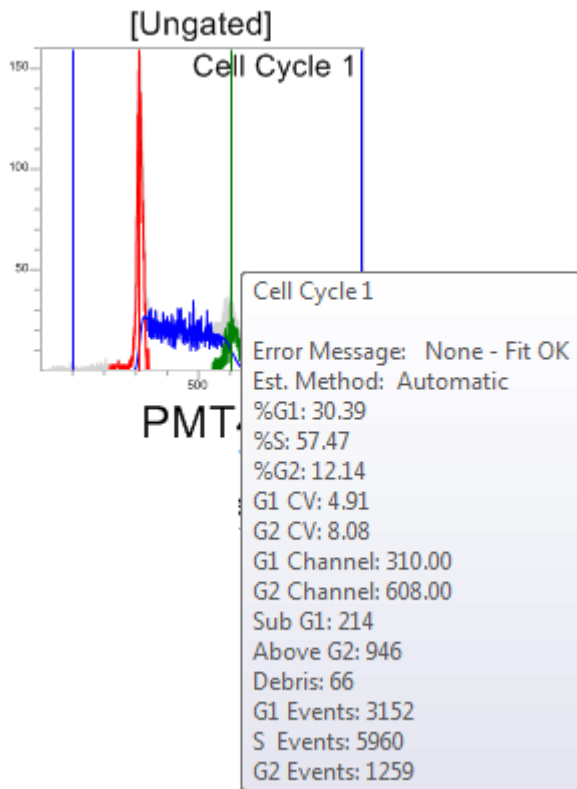


Representation of the DNA Cell Cycle Analysis Results

You can view the statistics associated with the Cell Cycle plot(s), in either a DNA plot tool tip or in a tabulated format.

DNA Plot Tool Tip

Hover the cursor over a DNA plot to display a tool tip listing the Cell Cycle number, statistics and the Error Message associated with the DNA plot as illustrated in the example below:



DNA Plots Results Representation

Each DNA cell cycle plot generates a results row in the **Results** table and results for the DNA statistics selected on the **Statistics** tab are displayed. For a cell cycle plot an additional **Error Message** column is added to the **Results** table. The message reported by the Cell Cycle Analysis, denoting whether the algorithm experienced any problems, is displayed in this column.

The possible **Error Messages** that can be displayed in the results table are listed below:

- **Successful Fit (None – Fit OK)**
- **Difficulty fitting G1 peak, used your estimate (1 – User Pk1)**
- **Difficulty fitting G2/M peak, used your estimate (2 – User Pk2)**

- Poor histogram, used less accurate method of fit (3 - Poor Fit)
- G1 CV out of range. Re-try using new estimate of G1 channel (4 - CV1 Range)
- G2 CV out of range. Re-try using new estimate of G2 channel (5 – CV2 Range)
- Large discrepancy of CVs. Fit may be in error (6 – CV Comp)
- Difficulty fitting G1 and G2 peaks, used your estimates (7 – User Peaks)
- G1 and G2 CVs out of range. Re-try using new estimates of G1 and G2 channels (8 – CVs Range)
- Could not estimate G2 more than G1 estimate. Could not fit histogram (9 – No Fit)
- Estimate of G1 and G2 too close to each other. (10 – No Fit)
- Estimate of G1 too close to lower noise level. (11 – No Fit)
- Estimate of G2 too close to upper noise level (12 – No Fit)
- Estimate of G1 and G2 too close to noise levels (13 – No Fit)
- Cell Cycle Exception happened (101 – No Fit)
- Histogram length and input channels inconsistent, no fit computed (102 – No Fit)
- Start Channel greater than End Channel, no fit computed (103 – No Fit)
- G1 estimate out of range, no fit computed (104 – No Fit)
- G2 estimate out of range, no fit computed (105 – No Fit)
- G1 and G2 estimates out of range, no fit computed (106 – No Fit)
- Histogram length less than or equal zero, no fit computed (107 – No Fit)
- Histogram events less than 500, no fit computed (108 – No Fit)
- Lower noise level higher than upper noise level, no fit computed (109 – No Fit)
- Error (Default)