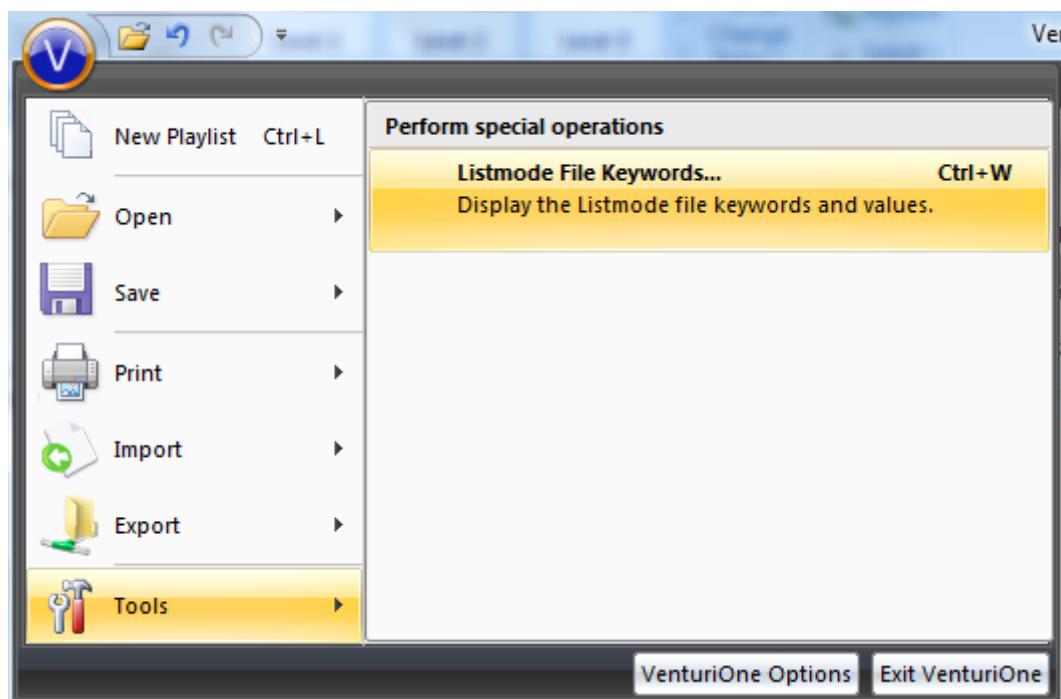
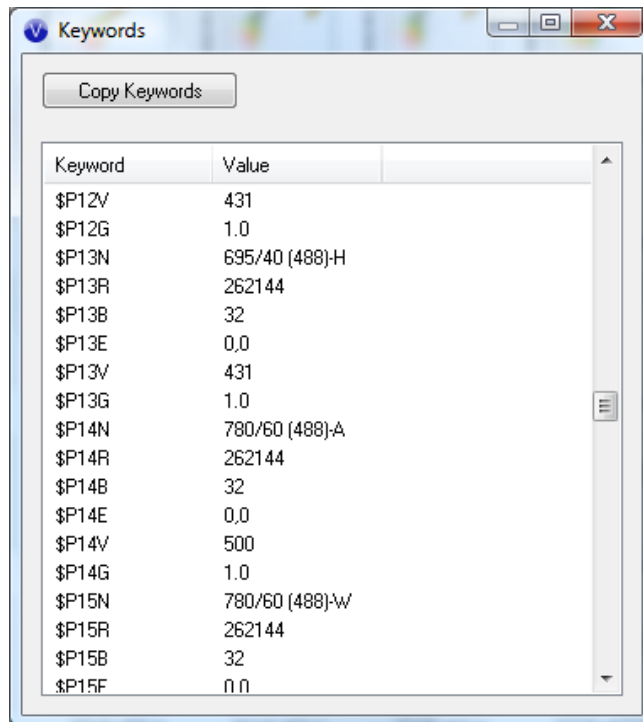


Listmode File Keywords

To view FCS header information in the **VenturiOne Menu** select the **Tools** option and then the **Listmode File Keywords...** menu item (only enabled if an LMD file is open in the workspace):



This will display the **Keywords** dialog illustrated below:



The dialog displays the FCS header information within the currently open LMD file

For Beckman Coulter FC500 series LMD file additional options are available and you can select whether **Primary keywords** or **Secondary keywords** are displayed.

The **Primary keywords** are those from the FCS 3.0 segment of the file. The **Secondary keywords** are those from the FCS2.0 segment.

Click the **Copy Keywords** button to copy the keywords and values displayed in the dialog. This list can then be pasted into other applications (e.g. Excel).

This menu item is only enabled if an LMD file is open in the Workspace. It is disabled when no LMD file is open.

Click the **Listmode File Keywords** button, to display the Keywords dialog, as illustrated below:

Click the **Copy Keywords** button to copy the keywords and values displayed in the dialog. This list can then be pasted into other applications (e.g. Excel).

The list can be scrolled and re-sized as illustrated in the figure above in which the default dialog has been re-sized to display the complete list of keywords. The dialog size will return to default each time it is opened.