

## Manual Compensation of Preview Plots

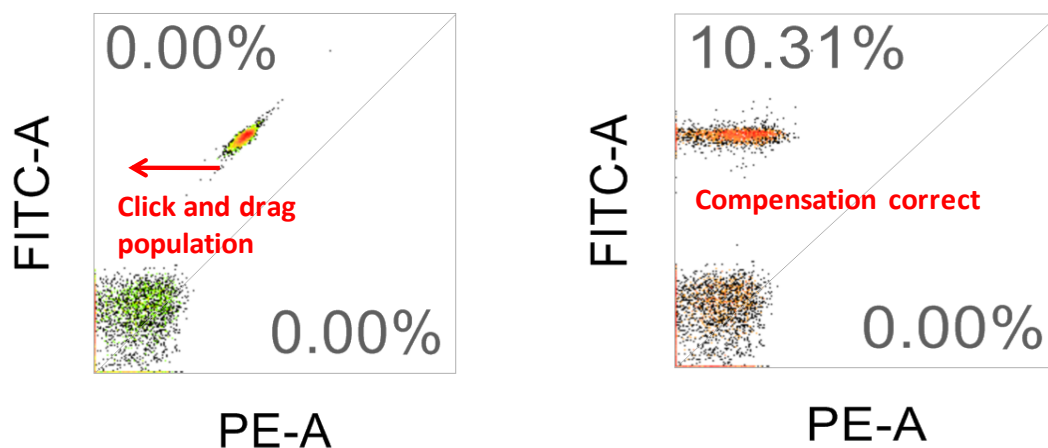
Controls in the **Preview Details** group allow you to manually adjust the compensation of the preview plots and also display the compensation percentage on the preview plots.



The buttons in the group are only enabled when a compensatable LMD file is loaded in the **Workspace**.

Click the **Manual Compensation** button if you would like to manually adjust the compensation settings of the currently open LMD file. The button becomes highlighted indicating that manual compensation is turned on.

When manual compensation is on, the preview plots display a diagonal line from lower left to upper right corner. This line distinguishes the two coefficient sections. Drag above the line in a horizontal direction to adjust one coefficient, as illustrated below. Similarly, you can also drag below the line in a vertical direction to adjust the other coefficient. The compensation coefficients can be adjusted from 0-100%.



Only the current plot is updated during dragging. When the dragging is complete, all selected plots and preview plots affected by the change are updated.

Click the **Show Compensation %** button to display the compensation coefficients for each parameter combination on all dual parameter preview plots, as in the above example.

Compensation coefficients are only displayed on preview plots that have two relevant fluorescent combination parameters.

Re-click the **Show Compensation %** button to hide the coefficients.