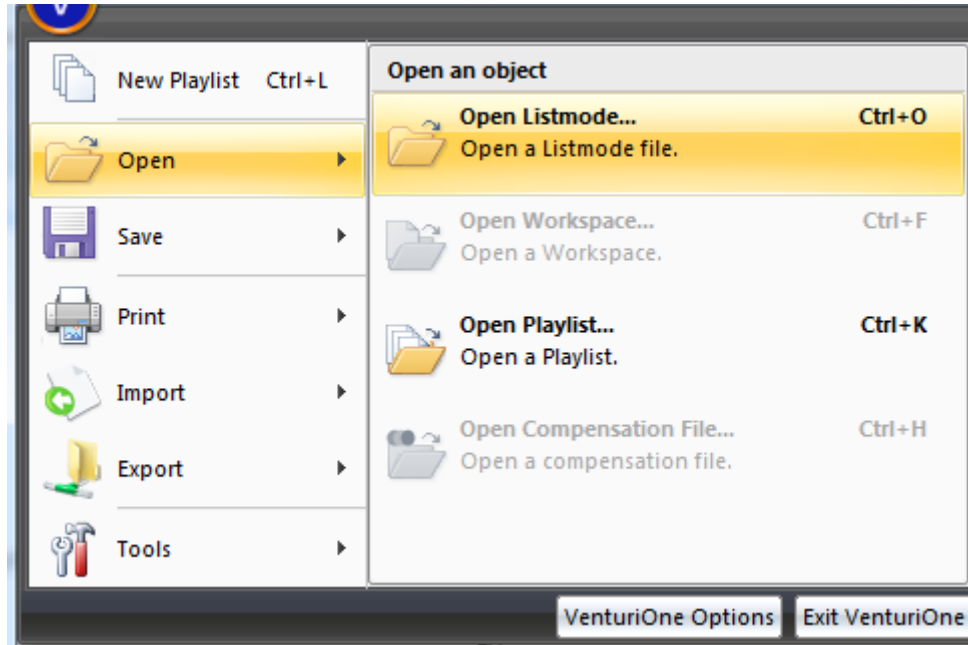
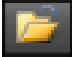


## Opening LMD files

To add a LMD file to the **Playlist** select one of the following three options:

- Select the **Open Listmode...** menu item from the **VenturiOne Menu**:

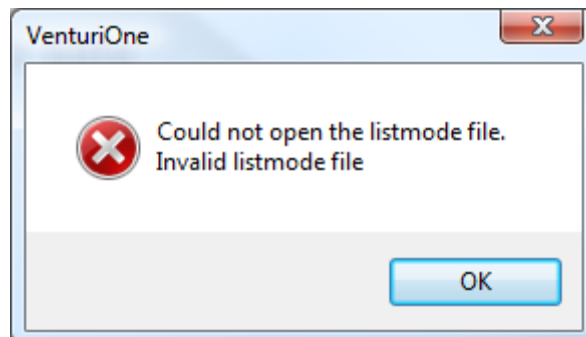


- Click the **Open Listmode**  button on the **Quick Access Toolbar**.
- Press the **Ctrl+O** keys.

Any of the above options will display a Windows **Open** dialog allowing you to select up to 400 files to be added to the **Playlist**.

You can also use Windows Explorer to drag and drop files directly into the **Playlist Panel**.

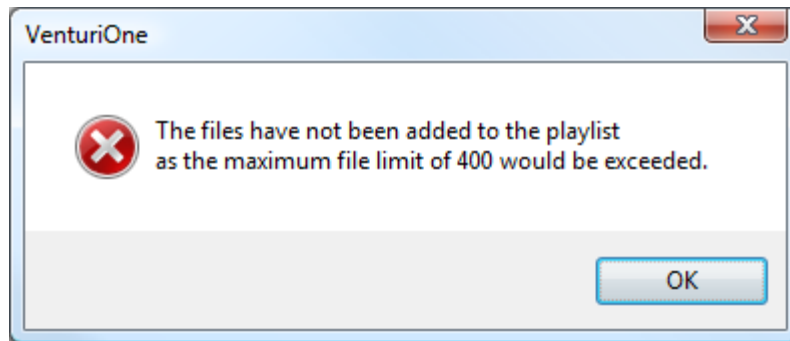
Windows will allow any type of file to be dragged and dropped into the **Playlist Panel**; however, VenturiOne will reject any files that are not valid listmode files and the following warning will be displayed:



Click **OK** to close this message. You should deselect the incorrect file types.

Additional error and warning message associated with adding a listmode file to the **Playlist** are described in section **Error! Reference source not found.**

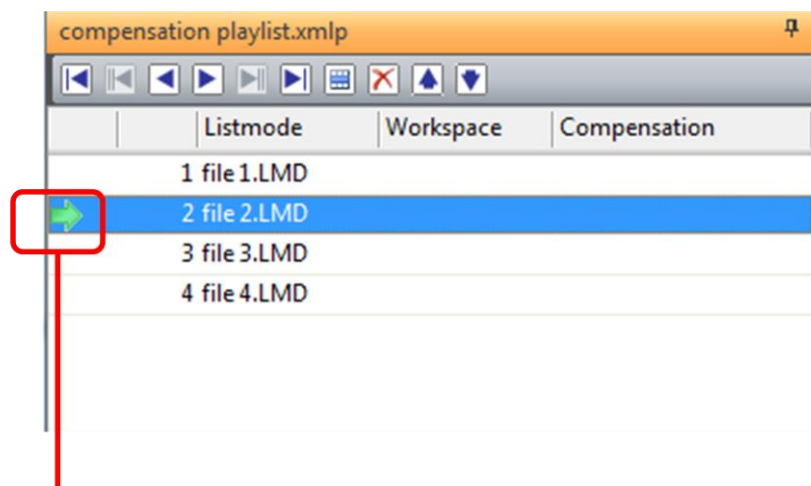
If the addition of listmode files to the **Playlist** would result in the maximum number of 400 files being exceeded, the following message is displayed:



Click **OK** to close this message; you will need to reduce the number of files you have selected to make sure that the 400 file limit is not exceeded.

**!** Check the Playlist after adding files, particularly when using Windows XP, to ensure all files are in the expected positions and re-order if necessary.

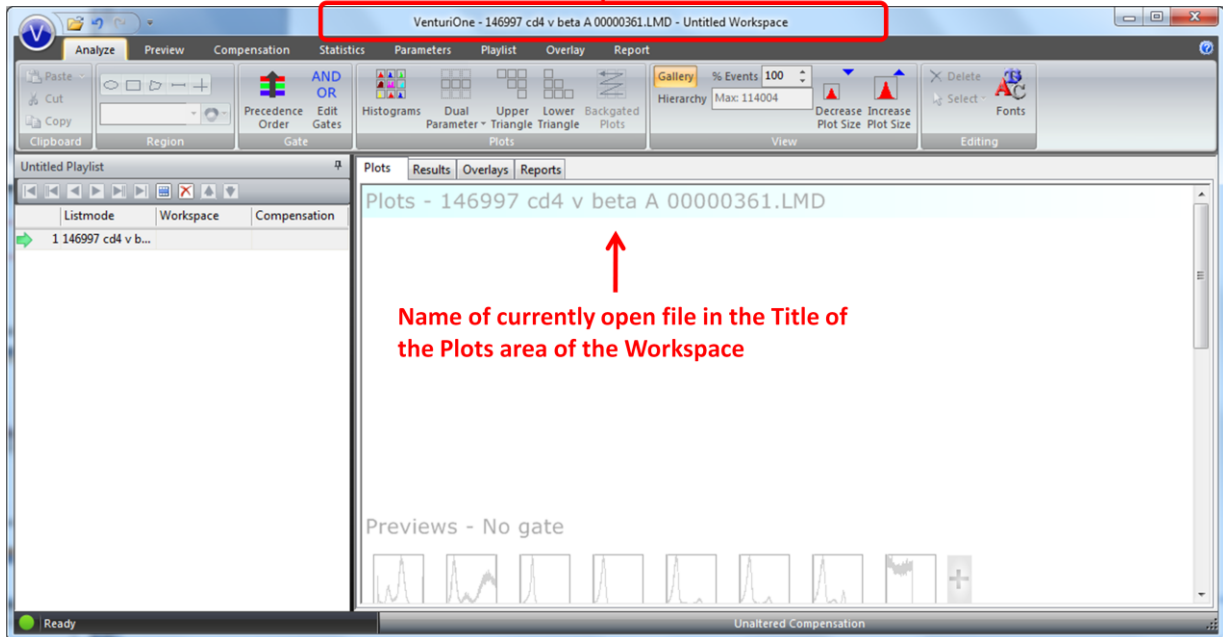
Depending on how you selected the LMD files, a file may already be open in the **Workspace**, if not you can double click on an item in the **Playlist** to open a file. The currently open file is shown in the **Playlist Panel** by a green arrow, as demonstrated below:



**Denotes the currently open file**

The filename of the currently open file is displayed in the VenturiOne **Application Title Bar** and in the **Title** of the **Plots** area of the **Workspace**, as illustrated in the picture below:

Name of currently open file in the Application Title Bar



Name of currently open file in the Title of the Plots area of the Workspace

If you need to verify further details about the loaded LMD file you can use the **Listmode File Keywords** dialog to view the keywords present in the file header,