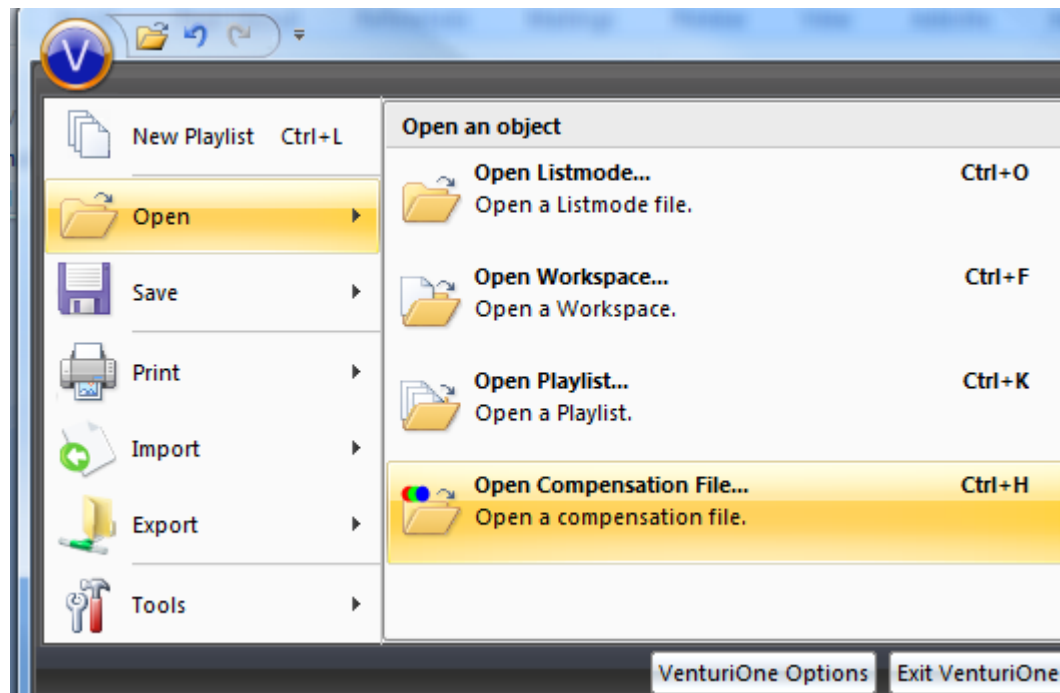


## Opening and Saving Compensation Files

### Open Compensation File

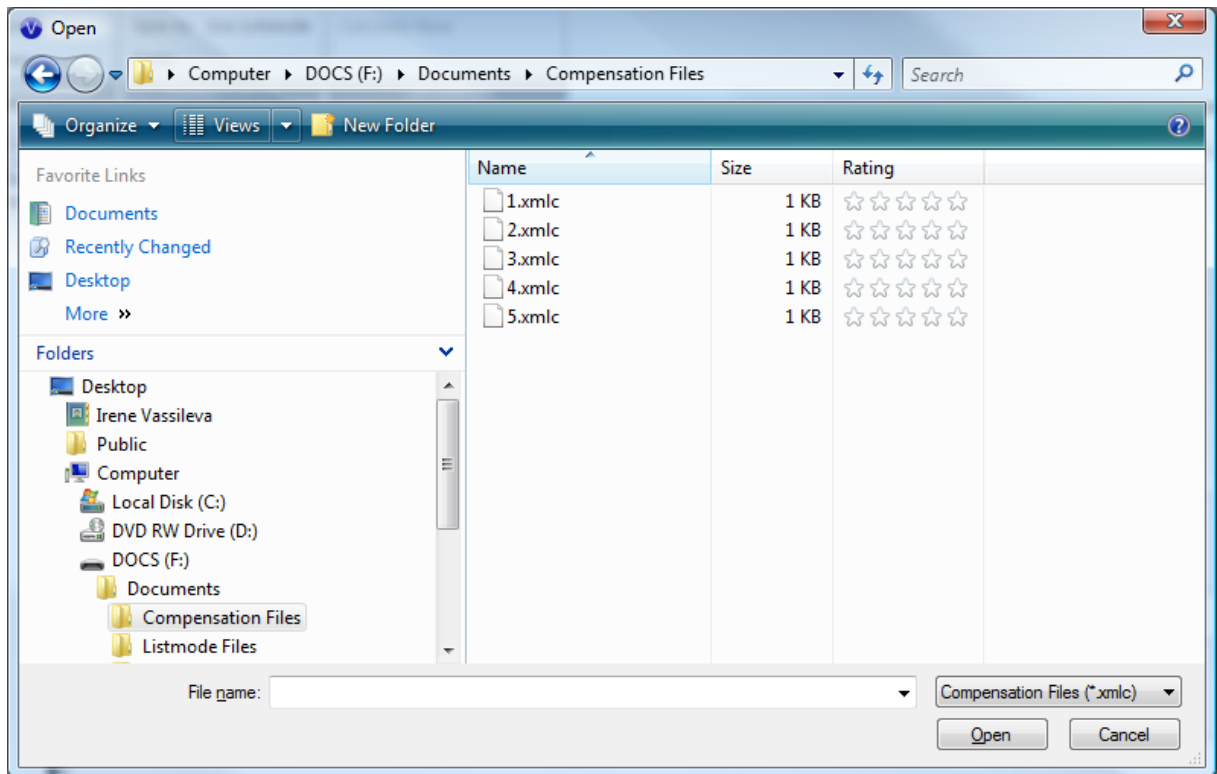
To open an existing compensation file click the **Open Compensation File ...** option on the **VenturiOne Menu** (or press the **Ctrl+H** keys).



The Windows **Open** dialog is displayed, listing the files present in the last used folder or **My Documents** if this is the first time you have used the software.

Select the desired compensation file and click the **Open** button to load the compensation file into the currently opened playlist item.

If the current folder is not the one containing your compensation files, you need to browse to the correct folder.

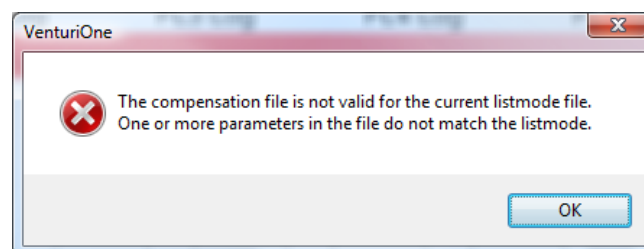


The files of type displays '**Compensation Files (\*.xmlc)**' and can be changed to display '**All Files (\*.\*)**'.

If a new compensation file is selected this will replace the one currently loaded. Only one compensation file can be opened at any one time and compensation is only available on high resolution files.

Double clicking a file in this dialog has the same functionality as selecting it and clicking the **Open** button.

If you attempt to open a replacement compensation file that has different parameters to the LMD file open in the workspace, the following message is displayed:



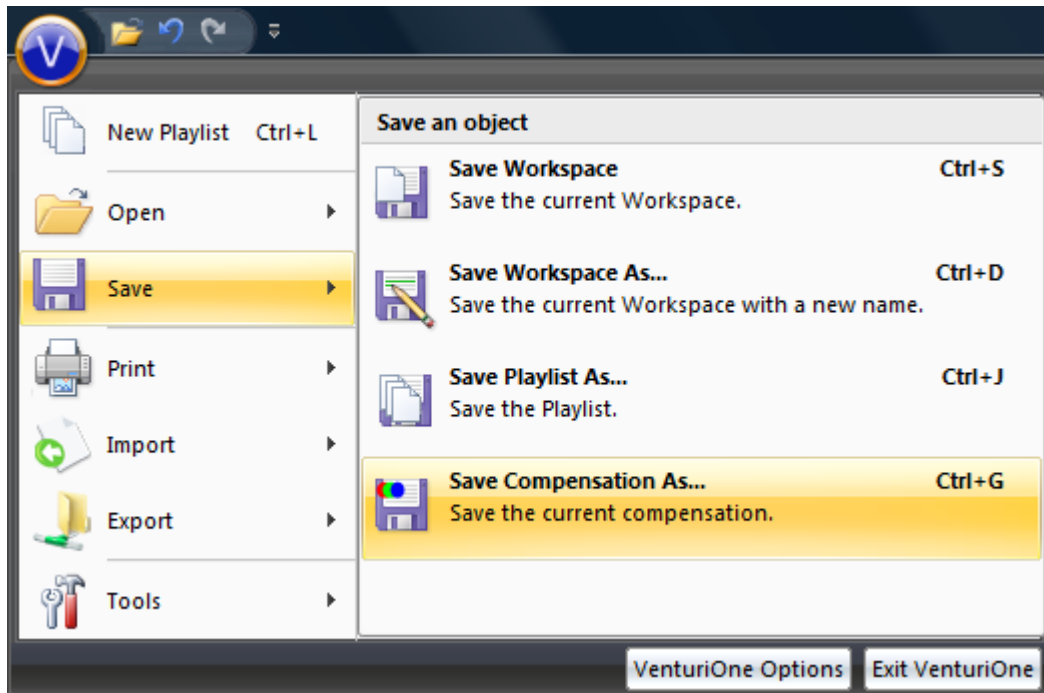
Click the **OK** button to close the dialog. The compensation file is not replaced.

Click the **Close** button (X top right) to close the dialog. The compensation file is not replaced.

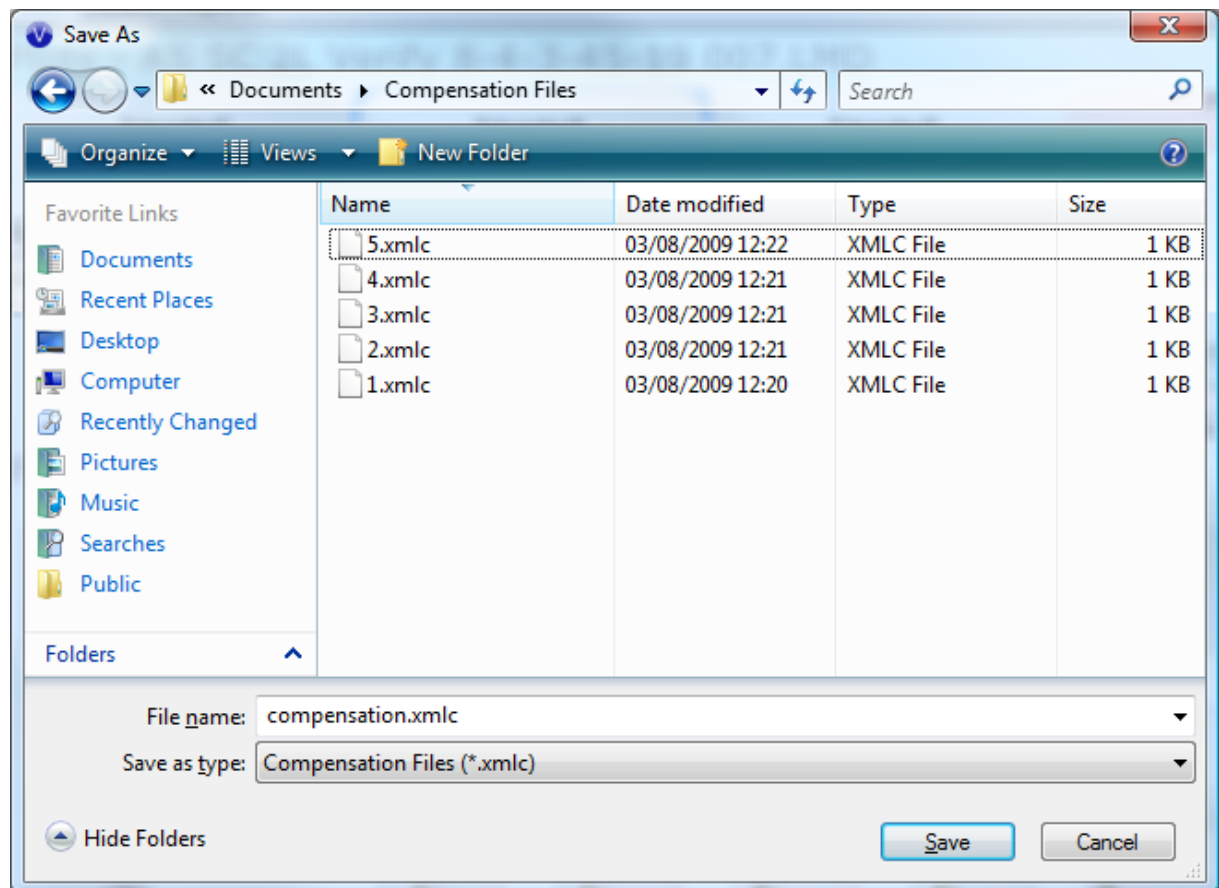
## Save Compensation File

The fluorescence compensation settings that are applied to a workspace can be saved and applied to other compensatable files.

To save the current compensation file click the **Save Compensation As...** option (or press the Ctrl + G keys).



The **Save As** dialog is displayed to allow the assignment of a relevant file name as illustrated below:



The default folder is the last used folder, or **My Documents** if there is no last used folder information.

The file is always saved with an **xmlc** extension.

The **File name** edit box will default to compensation.

The **Save as type** will display **Compensation Files (\*.xmlc)** by default but can be changed to **All Files (\*.\*)**.

You can enter a suitable name for the compensation file.

Click the **Save** button to save the current compensation file with the chosen name. If the selected file name already exists you will have the option to overwrite or change the file name.

Click the **Cancel** button or **Close** button (**X** top right), to close the **Save As** dialog without saving.