

Parameters Properties Dialog

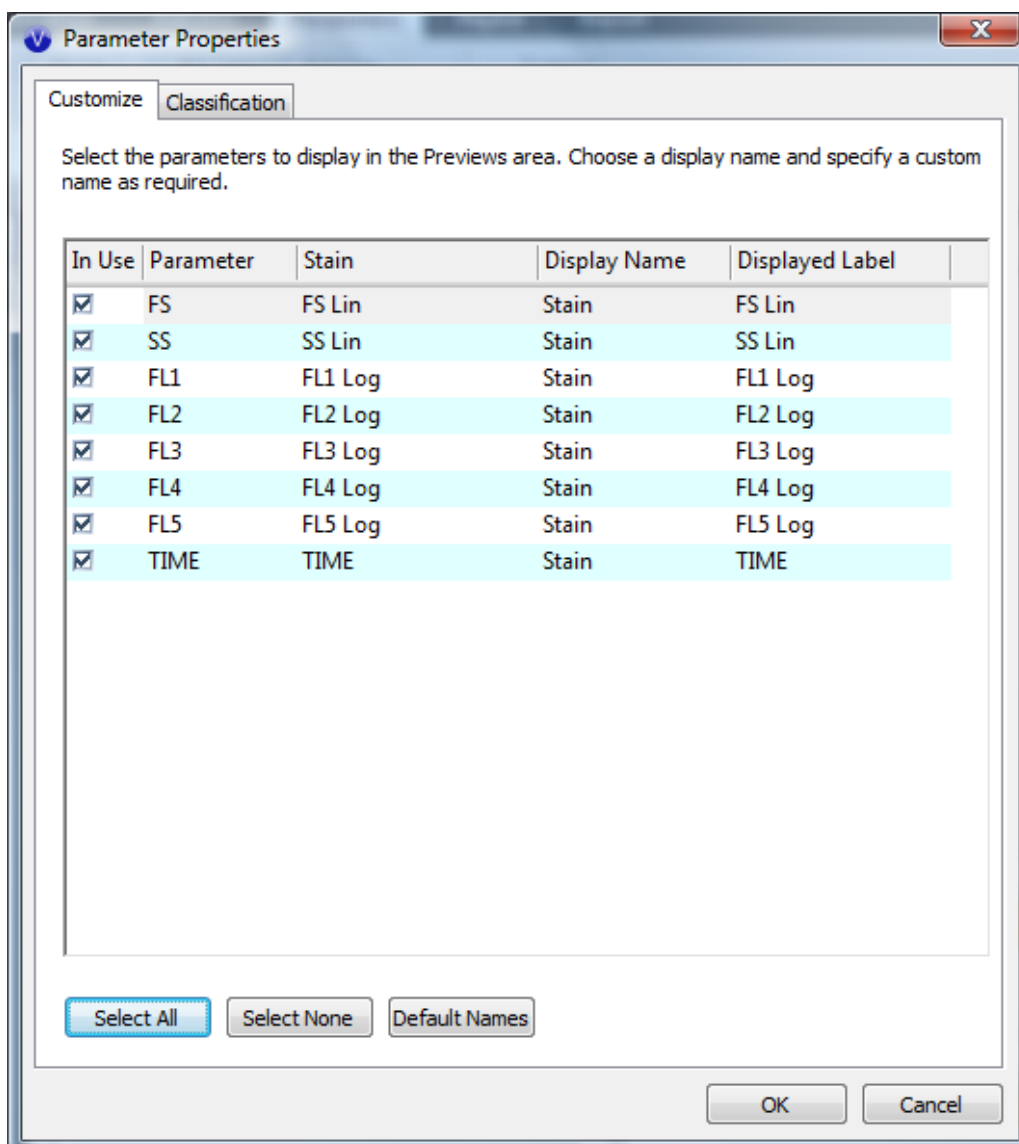
The **Parameter Properties** dialog provides the custom naming and parameter classification functionality of the VenturiOne software.

To launch the dialog click the **Parameter Properties** button in the **Properties** group.

The dialog can also be launched by double clicking the parameter name areas of the plot.

Customize tab

When the **Parameter Properties** dialog is launched the **Customize** tab is displayed by default. On the **Customize** tab you can select which parameters are displayed in the **Previews** area. You can also choose what is used as the display name for each parameter, as well as assign custom names to individual parameters.



Parameter List Control

The **Parameters List** control displays all parameters available in the currently loaded listmode file.

Check the check box in the **In Use** column if you wish the parameter to be displayed in the **Previews** area or un-check it to hide the parameter.

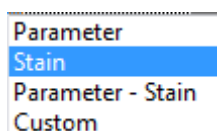
Selecting and deselecting parameters here does not affect plots already present in the **Plots** area.

The **Parameter** column displays the Parameter name for each parameter.

The **Stain** column displays the Stain name for each parameter.

The **Display Name** column allows you to select whether Parameter name, Stain name, Parameter name and Stain name or Custom name is used as the display name for the parameter. The default is Stain name.

Double clicking in the cell or pressing F2 opens a drop down list with options as follows:



Select the desired display name. Once the dialog closes the display name is used throughout the system.

When a new LMD file is loaded the custom display name will be used only if both the parameter name and stain name for the new file match those in the Workspace. If they don't match the Stain name from the new file is used as the display name.

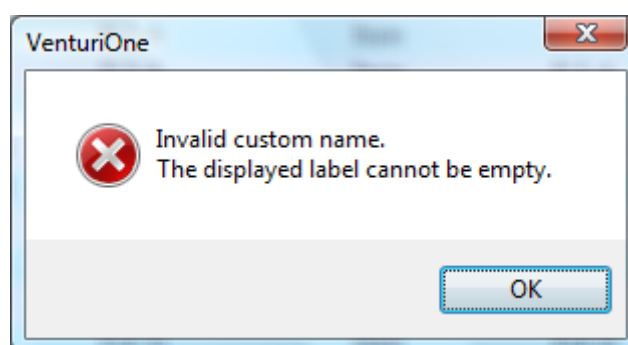
The **Displayed Label** column displays the name as selected in the **Display Name** column.

In the **Displayed Label** column you can also enter a custom name for the parameter.

The default used for the custom name is the Stain name (\$PnS).

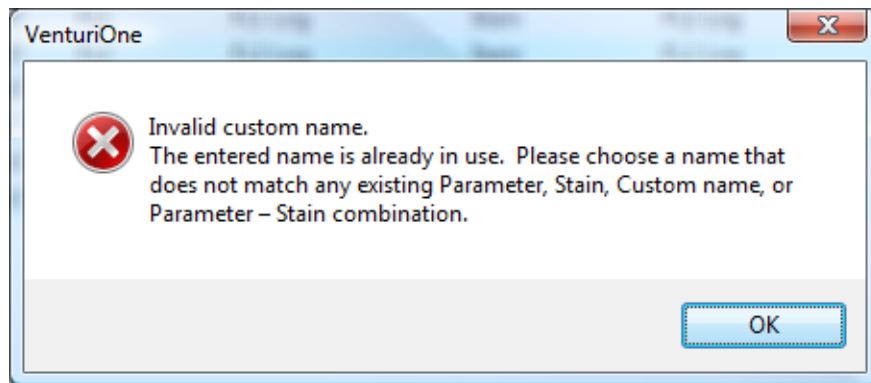
The custom name cannot start with a space and therefore the software will not allow you to enter space as the first character.

The custom name has to be a minimum of 1 character. The following error is displayed if it is left empty:



The custom name can be a maximum of 50 characters and the software will not allow you to type in more than 50 characters in the field.

The custom name has to be unique. If you type in a name that already exists the following message is displayed:



Select All, Select None and Default Names Buttons

Click the **Select All** button to selects all parameters.

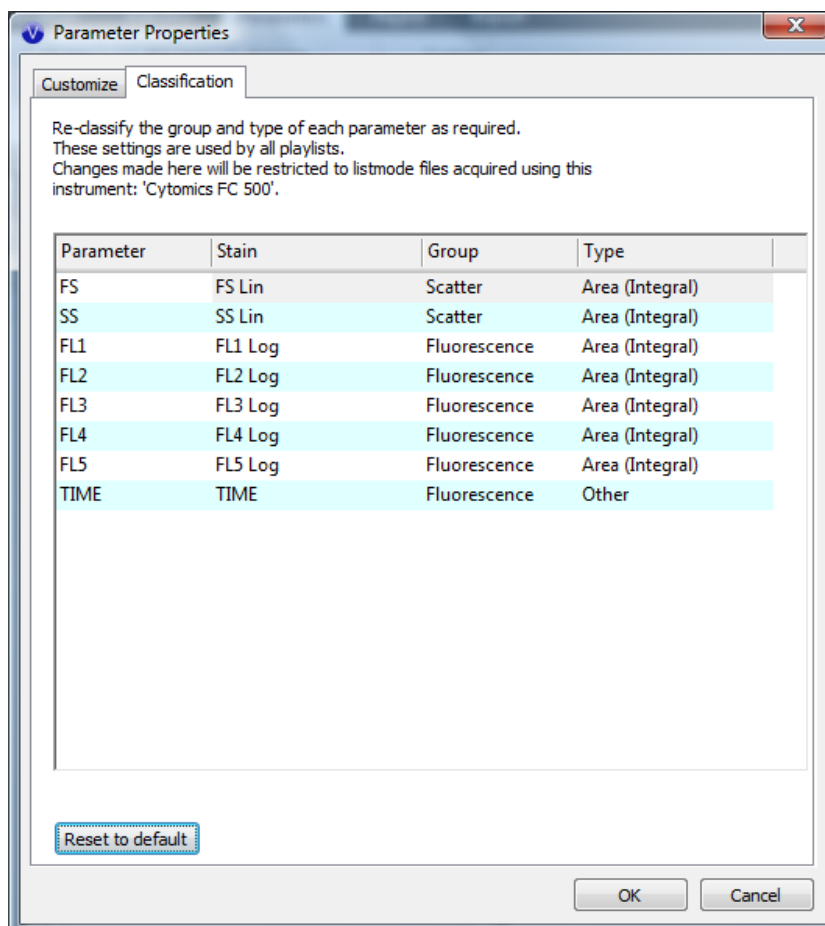
Click the **Select None** button to de-select all parameters.

Select the **Default Names** button to reset the display names for all parameters to Stain.

Classification tab

On the **Classification** tab of the **Parameter Properties** dialog you can re-classify the Group and Type of a parameter.

This classification is based on cytometer type; modifications made here will be stored for future use of files from that cytometer type.



Parameter List control

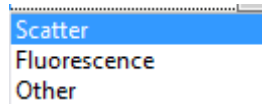
The **Parameters List** control displays all parameters available in the currently loaded listmode file.

The **Parameter** column displays the Parameter name for each parameter.

The **Stain** column displays the Stain name for each parameter.

The **Group** column allows you to select whether the parameter belongs in the Scatter, Fluorescence or Other group.

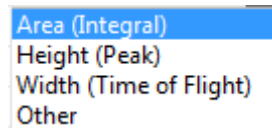
Double clicking in the cell or pressing F2 opens a drop down list with options as follows:



Select the desired group for the parameter.

The **Type** column allows you to select whether the parameter belongs in the Height (Peak), Width (Time of Flight), Area (Integral) or Other type.

Double clicking in the cell or pressing F2 opens a combo box allowing the user to change the Type. The options in the combo box are as follows:



Select the desired type for the parameter.

Select the **Reset to default** button will reset all parameters for the currently loaded file to their default values.