

Parameter Resolver and Other Playlist Errors

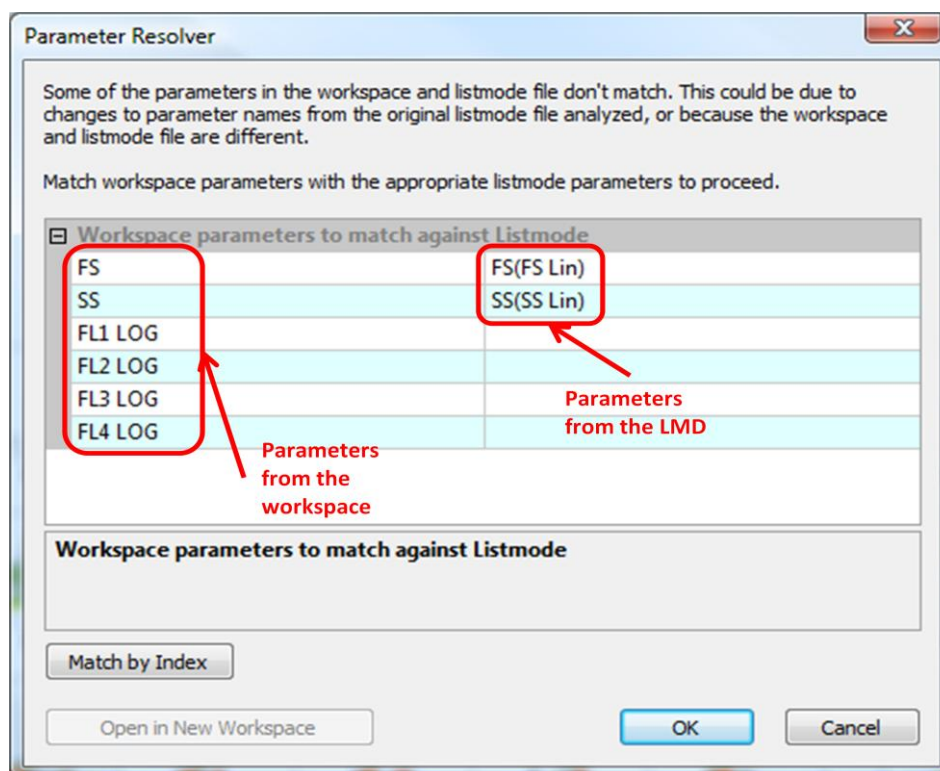
The **Parameter Mismatch** tooltip error is displayed when the parameters in the LMD file and workspace file do not match.

This tooltip error is displayed when the text of a playlist item appears red.

An example of the tooltip is below:

Parameter mismatch
C:\Venturi test files\Parameter Resolver Workspace1.xmlw

If you try to open such a file the **Parameter Resolver** dialog is displayed allowing you to resolve the mismatch. The **Parameter Resolver** dialog is pictured below:

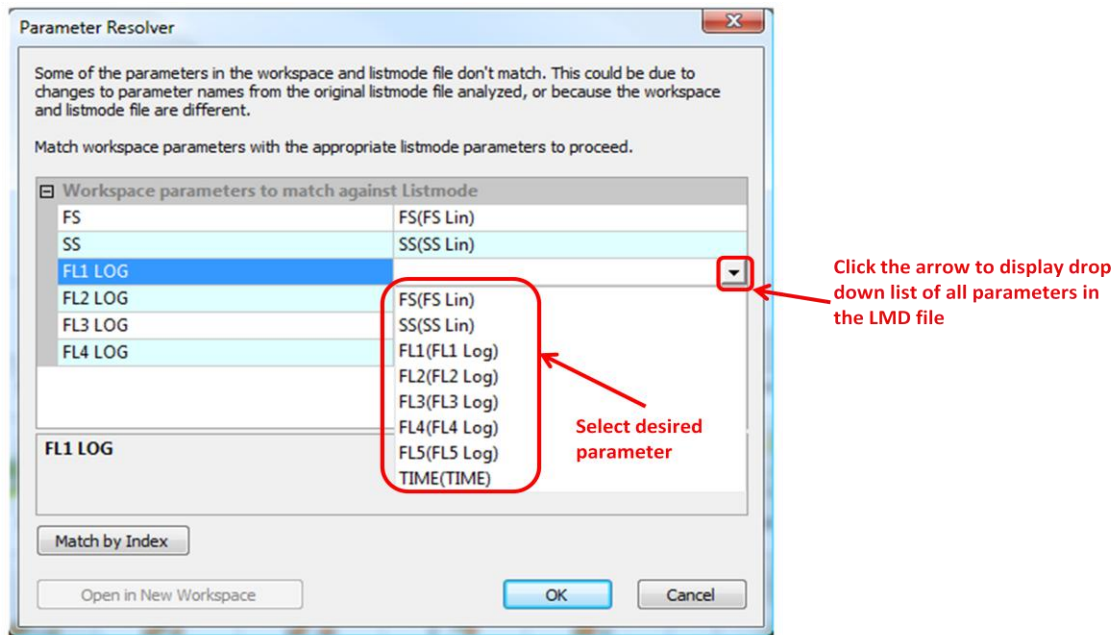


The left column contains a list of all the parameters in the current workspace file in the format \$PnN. The column on the right contains a list of all matching parameters from the LMD file in the format \$PnN (\$PnS).

The software will attempt to automatically match parameters, for example the FS and SS parameters have been automatically matched in the figure illustrated above.

All the parameters displayed in the left column must be matched to parameters in the LMD file before you can continue. Not all parameters from the LMD file need to be used.

Selecting a parameter in the left column displays an arrow in the corresponding right column. Click the arrow to display a drop down list of all the parameters in the LMD file.



From the list selected the parameter you wish to match to the one in the left column.

The software will only allow each parameter from the LMD file (right column) to be matched to a single parameter in the left column. If you select a parameter that has already been used the parameter is assigned to the last selection.

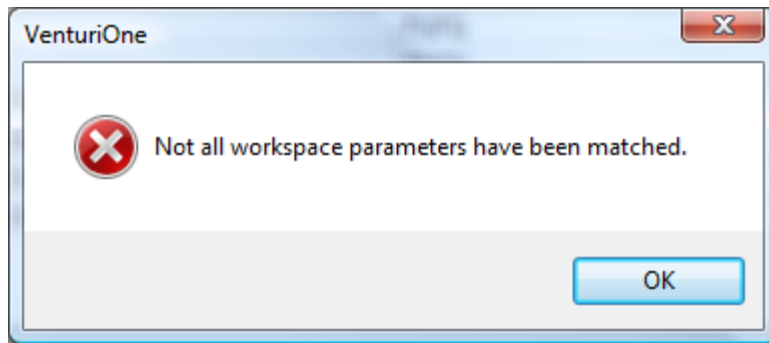
Instead of matching parameters manually you can click the **Match by Index** button to match the parameters on the right to those on the left by the order in which parameters are numbered in the listmode file FCS header information. If the software cannot match some of the parameters in this way the corresponding field will be left blank.

When opening an LMD file, instead of resolving the parameters you can choose to open the LMD file in to a new blank workspace by clicking the **Open in New Workspace** button. This will replace the current workspace with a new one and open the LMD file into that workspace.

The **Open in New Workspace** button is disabled when the mismatch is caused by opening a workspace file.

Click the **OK** button when you are finished matching the parameters. If all the parameters in the workspace file (left column) have been matched with parameters from the LMD file (right column) the **Parameter Resolver** dialog will close and the new file will open.

If not all parameters have been matched and you click **OK**, the following message is displayed:



Select **OK** to close the message and revert to the **Parameter Resolver** dialog.

Click the **Cancel** button closes the **Parameter Resolver** dialog without changing any parameters and without opening the new file.