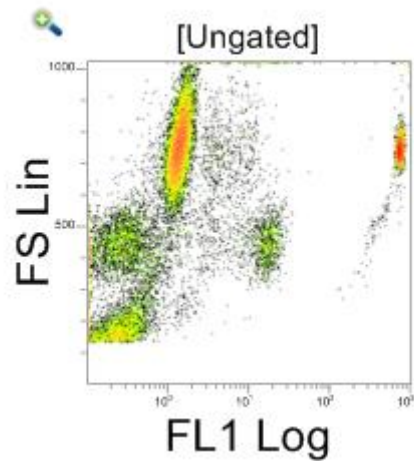


Plot Zoom Toggle

The **Plot Zoom Toggle** button allows you to toggle the current plot between the Default Scaling and the Parameter Zoom scaling.

The **Plot Zoom Toggle** button is only visible when one or more of the parameters associated with the plot have non-default zoom settings.

The **Plot Zoom Toggle** button is located on the top left corner of the plot:



If you hover over it a tooltip is displayed as illustrated below:

Toggle between Zoomed and Unzoomed displays.

! If you change the zoom status on a plot with a region then the region position does not change, you may need to reposition any regions set on zoomed parameters.