

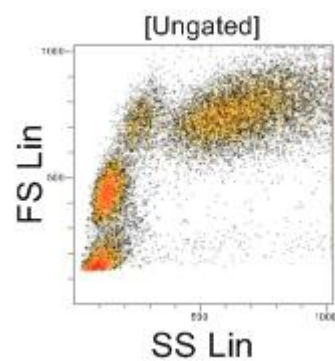
Plots Area

To analyze and modify the preview plots you must first add them to the **Plots** area.

Display of Plots in the Plots Area

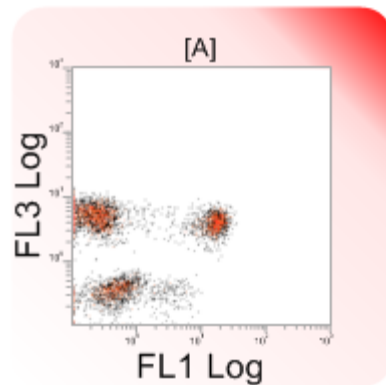
Plots selected from the **Previews** area are added sequentially to the current set of plots displayed in the **Plots** area.

An ungated plot displays no color border and **[Ungated]** as the plot heading:



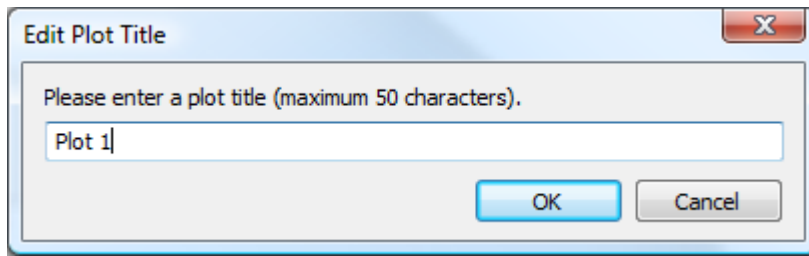
If the **Previews** area has a gate applied, the plots added to the **Plots** area will also have this gate applied. This process will automatically create a gate if required.

A gated plot is surrounded by a colored border which denotes the gate color applied, by default the gate name is displayed as the plot heading:

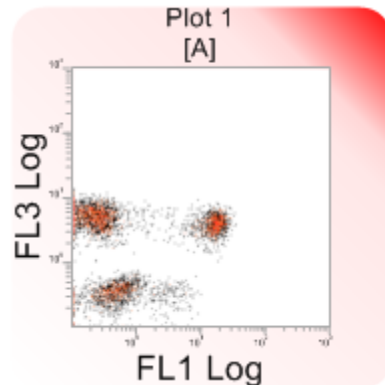


Editing the Plot Title

You can customize the title of a plot by double clicking the top margin of the plot. This launches the **Edit Plot Title** dialog, allowing you to add a custom title to the plot heading:

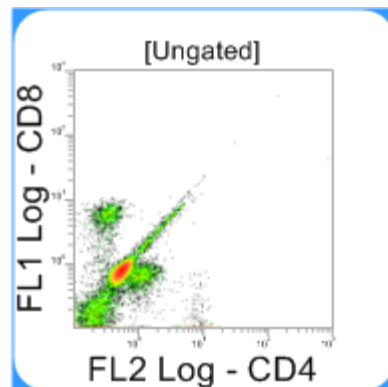


Enter the desired custom title in the edit field and click the **OK** button. The title is added to the heading of the plot:



Selecting Plots

Plots displayed in the **Plots** area can be selected in various ways in different combinations. A selected plot is surrounded by a blue selection rectangle:



Plots within the **Plots** area may be selected by clicking on the plot. **Ctrl** clicking on plots allows multiple selections. If a selected plot is **Ctrl** clicked, the plot is de-selected from the selection.

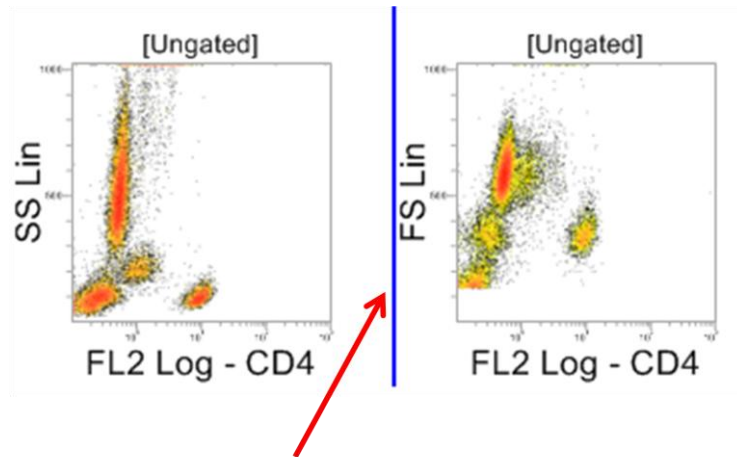
Plots displayed in the **Plots** area may also be selected by dragging out a selection rectangle around the desired plots. Ctrl dragging a selection area around plots will toggle that selection of the plots.

Pressing the Ctrl+A keys will select all the plots.

Plot selection options are also available from the **Editing** group on the **Analyze** tab.

Moving Plots

Plots can be rearranged within the **Plots** area by dragging and dropping. A vertical blue insert cursor highlights the new location of the plots.



Insert Cursor

When multiple plots are selected and dragged they are grouped together and moved as a group. After they are released they remain together.

The plots displayed in the **Hierarchy View** cannot be moved.

Deleting Plots

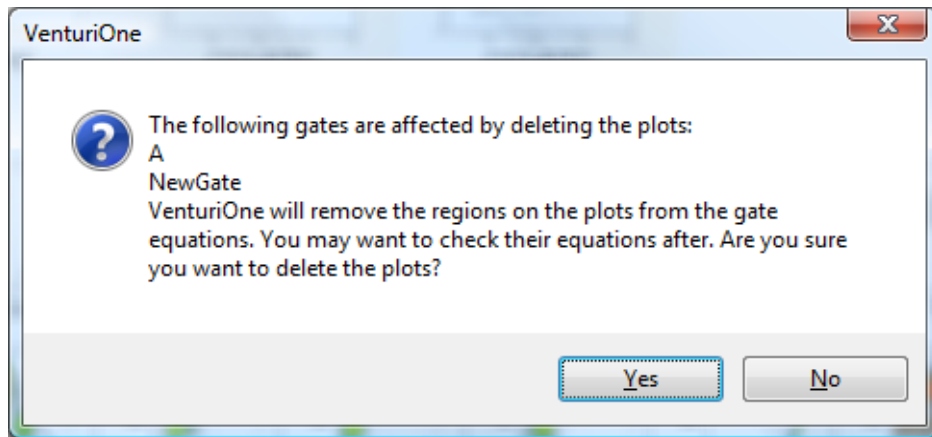
Plots may be removed from the **Plots** area by selecting them and pressing the **Delete** key.

Selected plots can also be deleted using the **Delete** button in the **Editing** group on the **Analyze** tab..

Deleting a Plot That Has a Region Applied

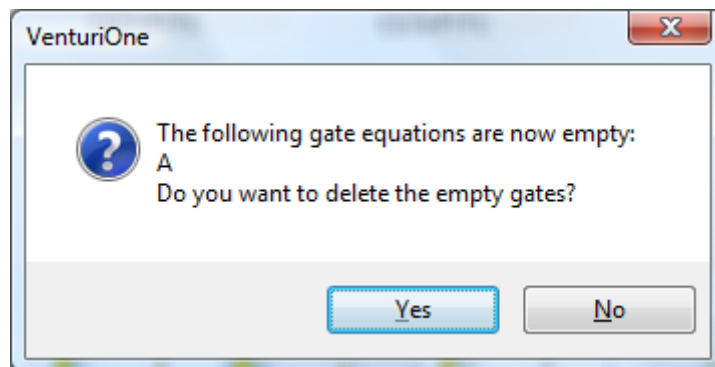
If the deleted plot has a region applied, deleting the plot also deletes the region and removes the region from any gating logic.

If the removal of a plot renders a gate equation empty, a warning, listing all the gates affected, is displayed:



Select **No** to close the message without deleting plots.

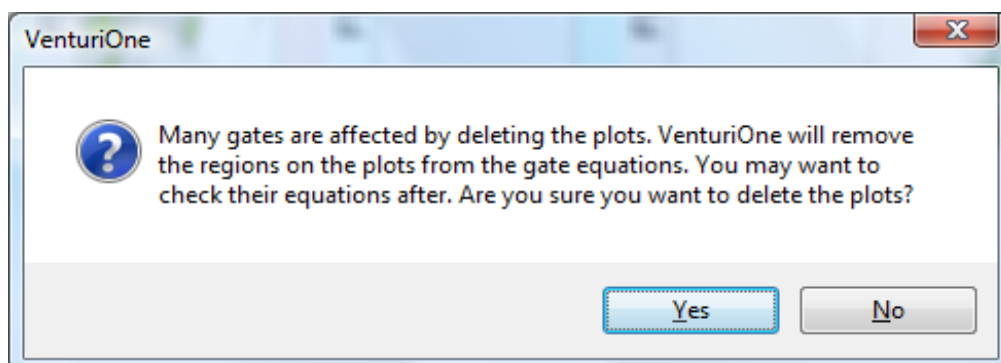
Select **Yes** to close the message and delete plots. You will then be asked if you would like to delete any empty gates:



Select **Yes** to close this message and delete plots and remove gates.

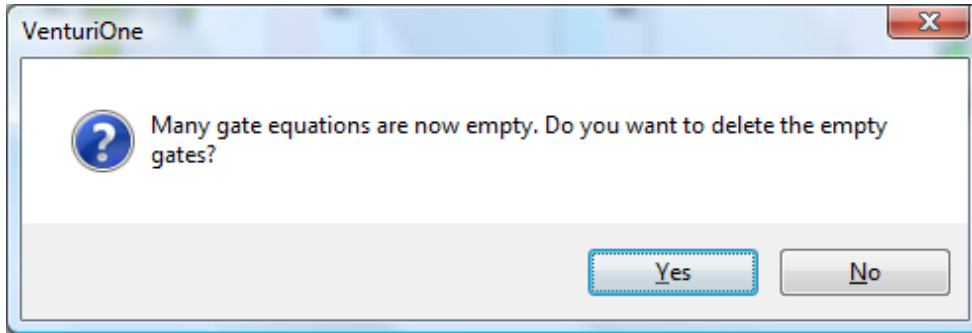
Select **No** to close this message, remove plots but maintain gates.

If more than ten gates are affected by the deletion of plots the following warning dialog is displayed:



Click the **No** button to close the message and cancel the plot deletion.

Click the **Yes** button if you want the plots to be deleted. You will then be asked if you would like to delete any empty gates:

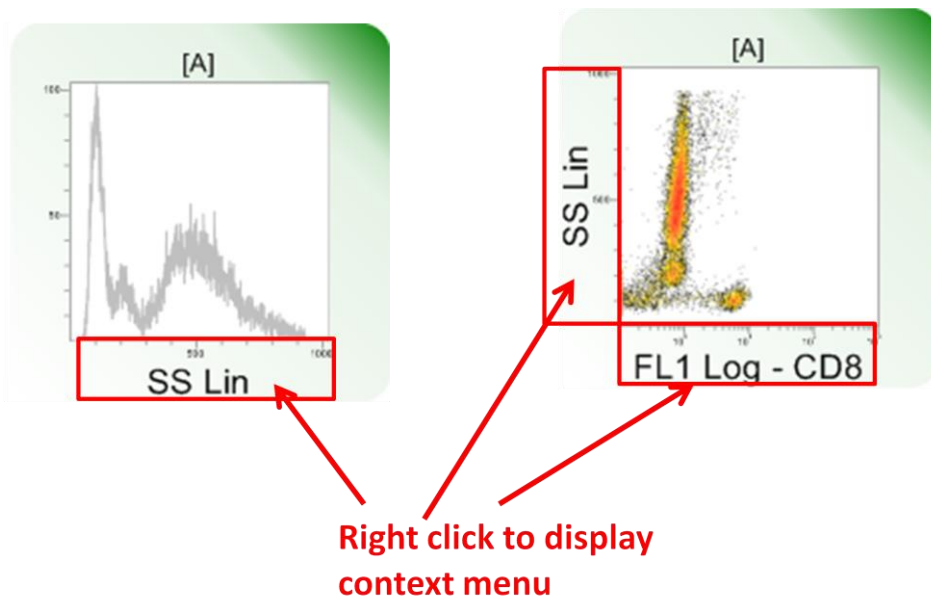


Click the **Yes** button to delete the plots and remove the gates.

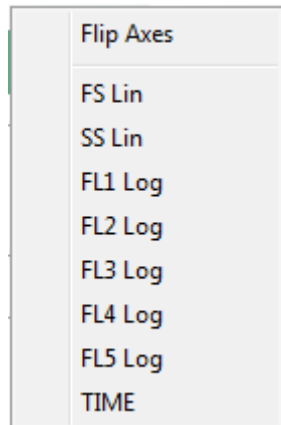
Clicking the **No** button to delete the plots, but maintain the gates.

Plot Parameters Modification

VenturiOne provides functionality for changing the parameters of the plots in the **Plots** area. You can right click anywhere in the area marked by the red rectangles as indicated in the figure below:



A context menu is displayed allowing you to select a different parameter:



The context menu contains all the parameters currently selected on the **Parameters** tab of the **Ribbon** and the option to 'Flip Axes' (disabled for histogram plots).

Double clicking in the area marked by the red rectangles launches the **Parameter Properties** dialog.

Changing a Parameter

When you select a different parameter from the menu the plot is updated to use the new parameter. The statistics and report are automatically updated as well.

The following are retained when a parameter is changed:

- Zoom status of the plot
- Smoothing settings for histogram plots.
- Gating of the plot
- Cell cycle options.
- Scaling

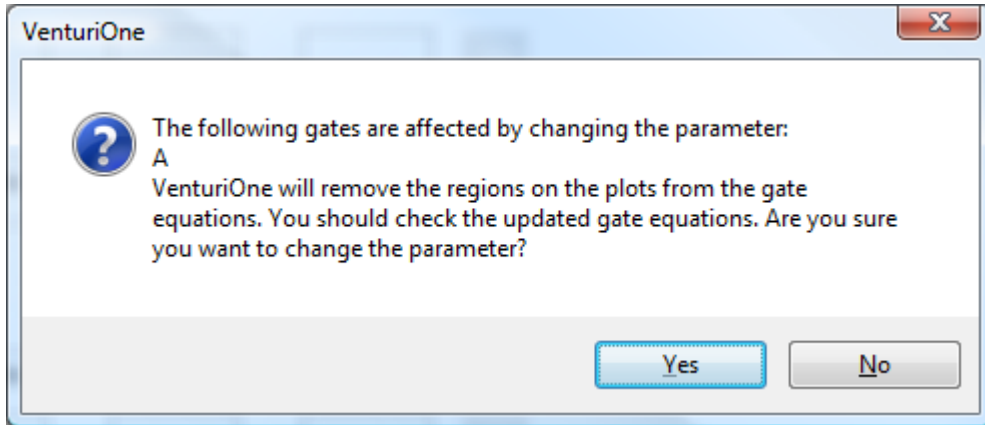
If there are regions on the plot they will have to be deleted before parameters are changed. If the regions are not used in gate equations the following message is displayed:



Select **Yes** to delete all regions on the plot and change the parameter.

Select **No** to not delete any region from the plot and not change the parameter.

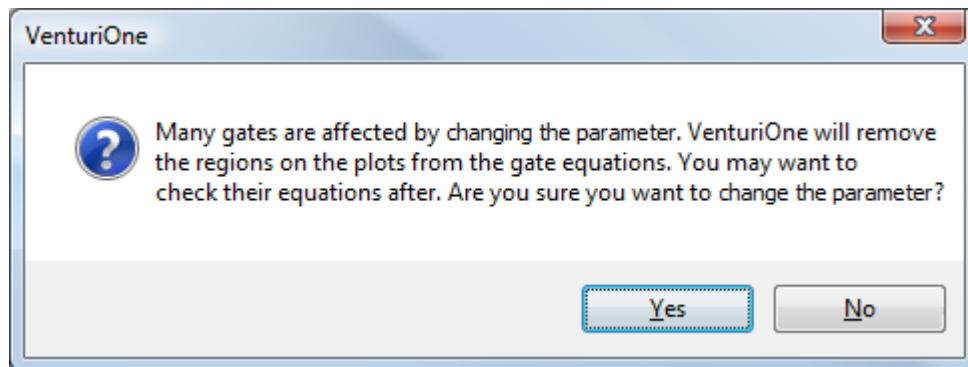
If there are regions on the plot and they are used in gate equations, the following message is displayed when you change a parameter:



If you click **Yes** the listed gates will be removed from all gate equations.

If you click **No** regions or gates will not be deleted and the parameter will not be changed.

When there are more than 10 gates affected, the following message is displayed:



If you click **Yes** the gates will be removed from all gate equations.

If you click **No** regions or gates will not be deleted and the parameter will not be changed.

If the removal of regions will result in any gate equations empty a warning message is displayed.

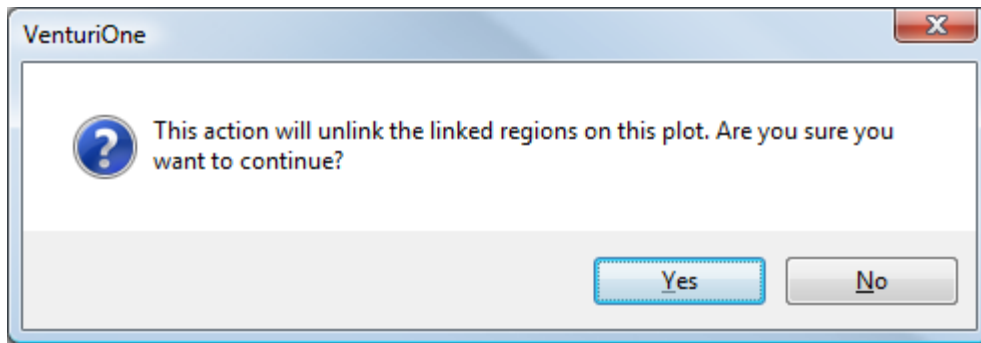
Flipping the Axes

You can select the **Flip Axes** option from the context menu if you wish to flip the axes of the plot. Any regions on the plot will be retained and flipped as well. Statistics and reports will automatically update.

When flipping a plot containing a quadrant region the quadrant dividers are flipped, but the names of the quadrants are persisted.

Any gate equations using these quadrant regions will be updated if required.

Any linking of regions will be removed if you flip plot axis. You will be warned before any changes are made as follows :



Select **Yes** to unlink the regions and flip the axes.
Select **No** to cancel flipping the axes. The linked regions will be retained.