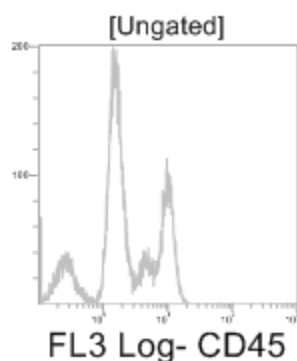


Types of Plots

VenturiOne software can display four plot types: Single Parameter Histogram Plots, Dual Parameter Color Density Plots, Dual Parameter Color Precedence Plots and Dual Parameter Precedence Density Plots.

The **Plot Format** tab of the **Ribbon** allows you to modify properties of individual plots, including changing of the plot type.

Single Parameter Histogram Plots



Single Parameter Histogram Plots display the 1024 bin histogram for a single parameter. The plot may be gated or un-gated.

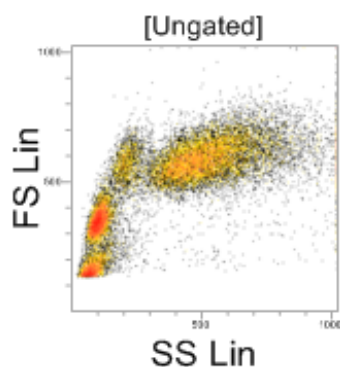
Dual Parameter Color Density Plots

Dual Parameter Color Density plots are two dimensional 256 x 256 bin histograms which use color to represent the level of events within each bin.

Six levels of color are used for the Density Plots:

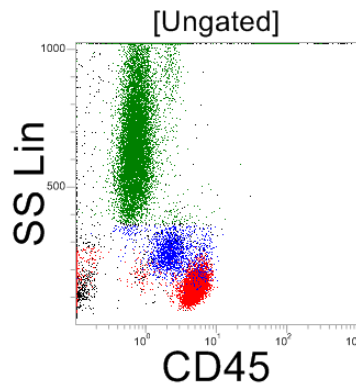
- Black Outlier Singles
- Vibrant Blue Lowest Density
- Vibrant Green
- Vibrant Yellow
- Vibrant Orange
- Vibrant Red Highest Density

An algorithm is used to calculate the levels, based on the number of events. The levels have logarithmic intervals.



Dual Parameter Color Precedence Plots

Dual Parameter Color Precedence Plots are two dimensional 256 x 256 bin dot plots which use color to represent the gating events that fall within specific gates. Where an event may be in multiple gates, the precedence order determines which color is chosen. Where events from multiple gates fall within a single bin, the highest precedence gate color is chosen. Ungated events are displayed black.



Precedence order can be changed via the **Precedence order** dialog.

Dual Parameter Precedence Density Plots

Dual Parameter Precedence Density plots are displayed as color precedence plots but include density information as well as color precedence.

