

Report Wizard

In VenturiOne you can easily create report using the **Report Wizard**. To launch the **Report Wizard** go to the **Reports** tab of the **Ribbon** and click the **Report Wizard** button. You must have at least one plot in the current **Workspace** for the button to be active.

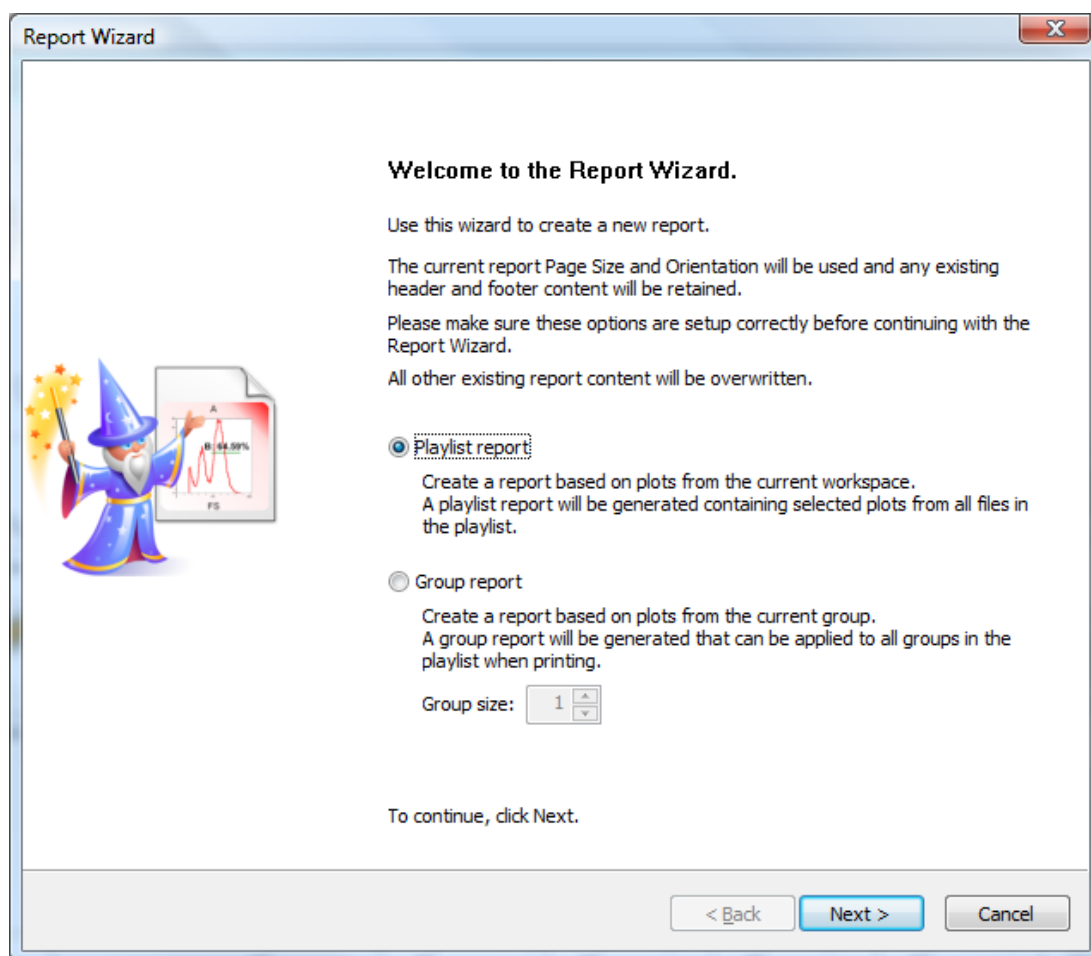


Any existing header and footer content will be retained and used in the report created via the wizard.

The wizard can be used to create either a Playlist or a Group report. The wizard retains settings until you open or create a new playlist.

Welcome Page

The first page of the wizard is the **Welcome** page and is displayed when the Wizard is launched:



The Welcome page introduces you to the wizard's functionality. It also allows you to choose whether you would like the wizard to create a Playlist report or a Group report.

To create a Playlist report, select the **Playlist report** radio button.

To create a Group report, select the **Group report** radio button and then use the **Group size** spin control to set the size of the group. To set the group size you can either use the up and down arrows of the **Group size** spin control or type a number in the edit field of the control.

When finished with the **Welcome** page click the **Next** button to proceed to the **Plot Selection** page of the wizard.

Plot Selection Page

The **Plot Selection** page shown below enables you to pick the required plots for the report that will be created by the wizard.

<input checked="" type="checkbox"/>	File No.	X Parameter	Y Parameter	Gate
<input checked="" type="checkbox"/>	1	SS Lin	FS Lin	Ungated
<input checked="" type="checkbox"/>	1	FL3 Log- CD45		Ungated
<input checked="" type="checkbox"/>	1	FL4 Log - CD19		Ungated
<input checked="" type="checkbox"/>	1	FL1 Log - CD8		A
<input type="checkbox"/>	2	SS Lin	FS Lin	Ungated
<input type="checkbox"/>	2	FL3 Log- CD45		Ungated
<input type="checkbox"/>	2	FL4 Log - CD19		Ungated
<input type="checkbox"/>	2	FL1 Log - CD8		A

Plot Order

Plot Selection

FL1 Log - CD8

B: 21.66%

When **Playlist report** has been selected on the **Welcome** page, the **Plots list** displays a list of the plots of the current playlist item **Workspace**.

When **Group report** has been selected the **Plots list** displays a list of all plots from all the **workspaces** in the group.

For each plot the **Plot list** displays the item number for the workspace containing the plot, the X and Y parameters and the Gate.

To add a plot to the report, check the checkbox for the plot.

When re-running the wizard with the same playlist, previously checked plots will be remembered.

If a single plot in the **Plot list** is highlighted a preview of that plot is displayed.

The plots will appear in the report created by the wizard in the order they appear in the **Plot list**.

You can use the **Move Up**  and **Move Down**  buttons to move selected plots up and down in the list. To reset the plot order, use the **Reset** button.

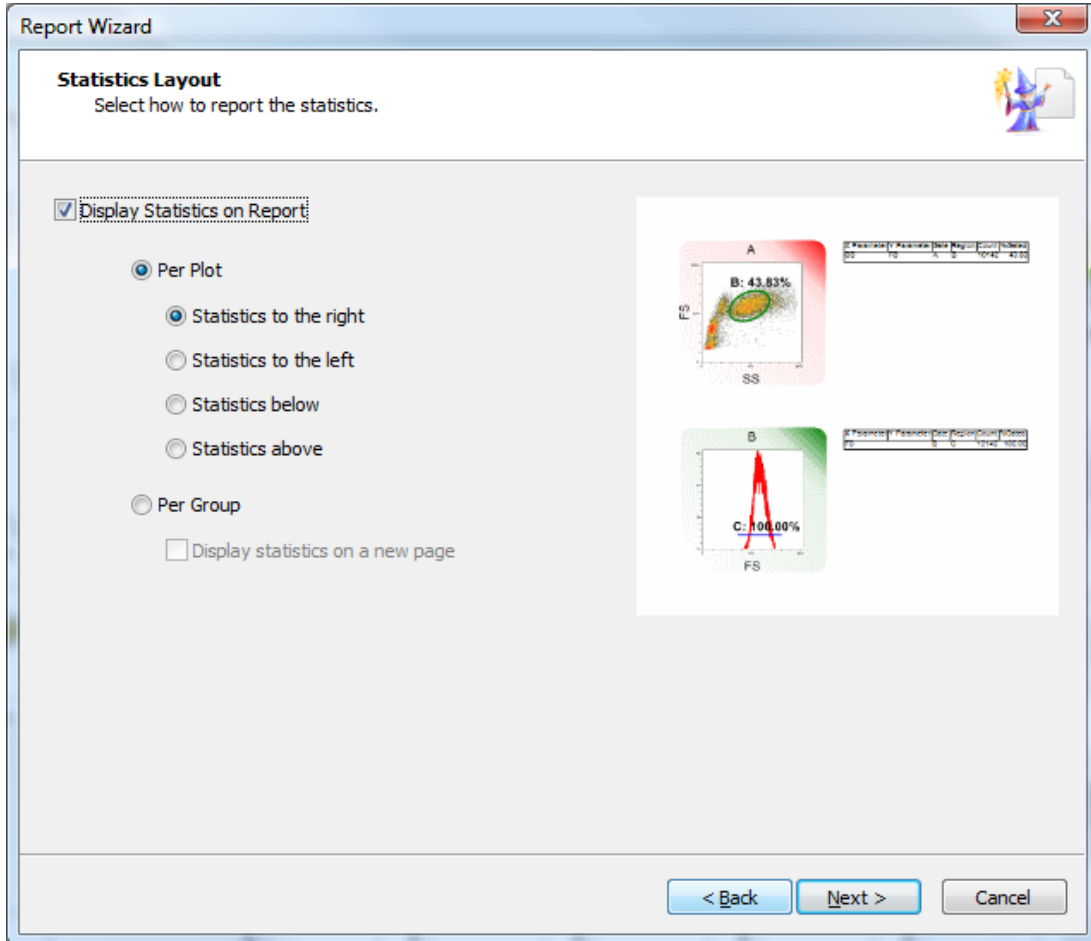
You can use the **Select All** and **Select None** buttons to easily select or deselect all plots.

If you would like the Plot list to display only the plots which you have selected for the report check the **Show only selected plots** checkbox.

Select the **Next** button to proceed to the **Statistics Layout** page.

Statistics Layout Page

The **Statistics Layout** page shown below enables you to select the required statistics for the report and their layout on the report.



If you would like statistics to be displayed on the generated report check the **Display Statistics on Report** checkbox

Select the **Per Plot** radio button if you would like statistics displayed next to the plot they pertain to. The four child radio buttons: **Statistics to the right**, **Statistics to the left**, **Statistics below** and **Statistics above** become enabled. Select the desired option for the display of statistics.

When creating a **Playlist** report you can select the **Per Playlist** radio button if you would like all statistics displayed together at the end of the playlist report.

When creating a **Group** report you can select the **Per Group** radio button if you would like all statistics displayed together at the end of each group report.

Check the **Display statistics on a new page** check box if you would like the statistics to be on a new page at the end of the report.

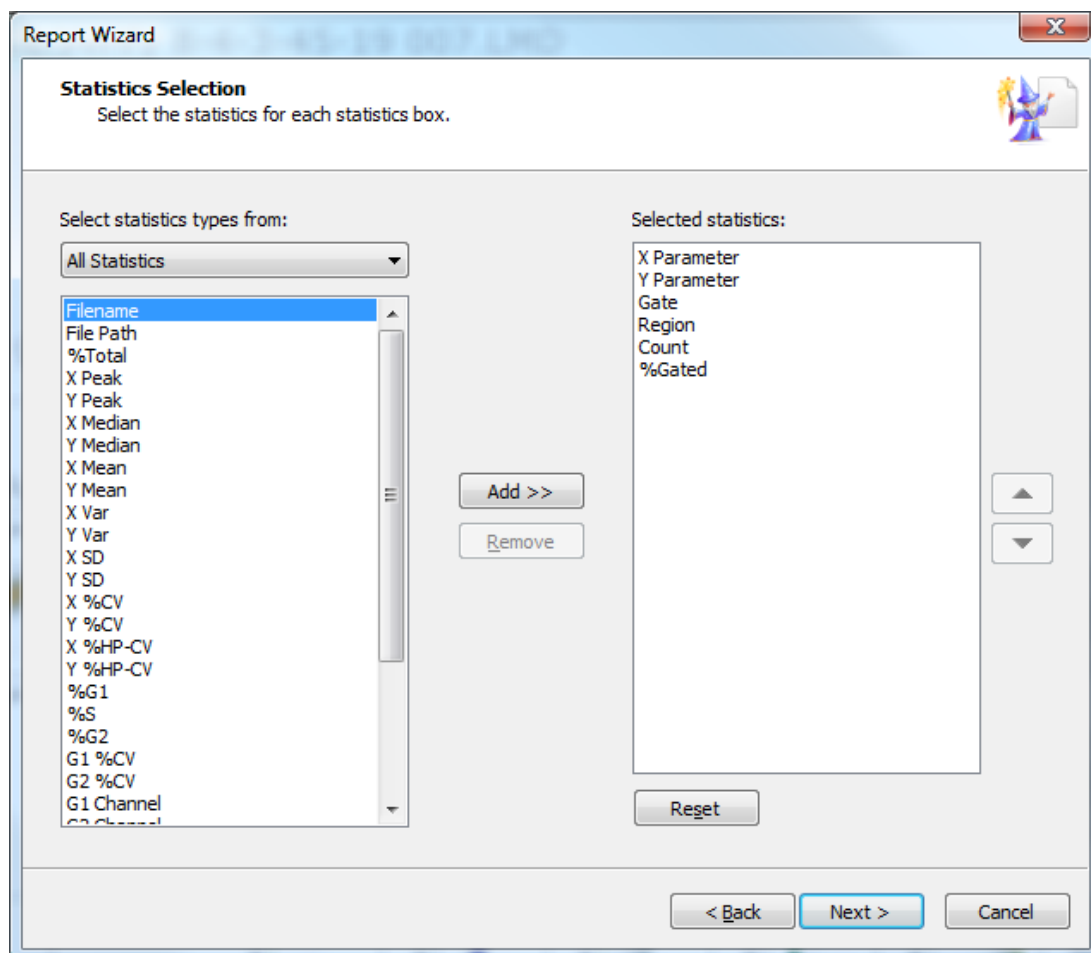
A preview of the layout of the statistics on the page is displayed allowing you to visualize how your report will look.

Click the **Next** button to proceed to the next page of the wizard.

Statistics Selection Page

The **Statistics Selection** page enables you to select the required statistics and the order in which they are displayed on the report.

This **Statistics Selection** page is only available if the **Display Statistics on Report** checkbox was checked on the previous page.



By default all statistics will be available for selection, you can use the **Select statistics types from** combo box to view a reduced group of statistics.

By default the **Selected statistics** list is populated only with the statistics that are selected in the Results tab of the Workspace.

To add statistics to the **Selected statistics** list, select the desired statistics and press the **Add** button.

The statistics in the **Selected statistics** list will be displayed on the generated report in the order they appear in the list.

You can use the **Move Up**  and **Move Down**  buttons to change the order of the statistics.

To remove statistics from the **Selected statistics** list select them and then press the **Remove** button.

You can reset the selected statistics to their state when the page was first displayed by pressing the **Reset** button.

Report Layout Page

The **Report Layout** page enables you to select the required report layout.

The screenshot shows the 'Report Wizard' dialog box, specifically the 'Report Layout' step. The window title is 'Report Wizard' and the page title is 'Report Layout'. The subtitle is 'Select options for the report layout.' The page contains three main sections: 'Miscellaneous' with a checkbox for 'Automatically adjust header and footer to use minimum possible size' and a 'Plots per page' dropdown set to '9 Plots'; 'Ordering of Report Objects' with radio buttons for 'Display plots from the same file together' (selected) and 'Display the same plots from all files together'; and 'Separator' with a checkbox for 'Use separator' and radio buttons for 'Draw line' (selected) and 'New page'. At the bottom are '< Back', 'Finish', and 'Cancel' buttons.

If you check the **Automatically adjust header and footer** check box the header and footer of the generated report will be set to use minimum possible size depending on their contents.

The **Plots per page** drop down list allows you to specify how many plots per page are required in the report.

When not reporting statistics or when statistics are aggregated at the end of the report (playlist or group), you can have 1, 4, 9 or 20 plots per page.

When reporting statistics the options are 1, 2 or 3 plots per page.

The **Ordering of Report Objects** group enables you to specify how the plots are ordered on the report. Select the **Display plots from the same file together** if you would like plots from the same file to be kept together in the report. If you would like the same plots from all files displayed together select **Display the same plots from all files together**.

When **Display plots from the same file together** is selected a section is all the plots belonging to the same file.

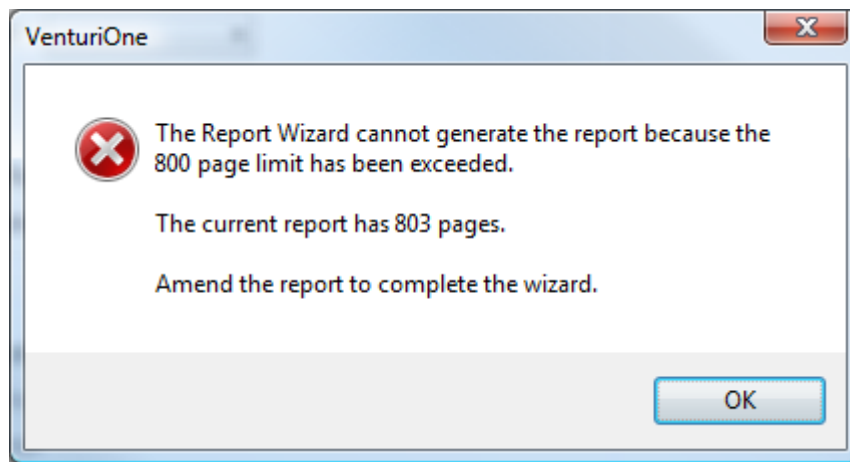
When **Display the same plots from all files together** is selected a section is all the plots with the same parameters.

If you would like to separate sections in the generated report with a line or on a new page, check the **Use separator** checkbox in the **Separator** group.

Select **Draw line** if you would like a line to separate different sections. If you would like each section to start on a new page select **New page**.

To complete the wizard click the **Finish** button. The wizard will close and the report will be generated.

If the report generates in excess of 800 pages you will be warned via the following message box.



Select OK to close the message. The **Report Wizard** remains open enabling you to make changes to the required report.