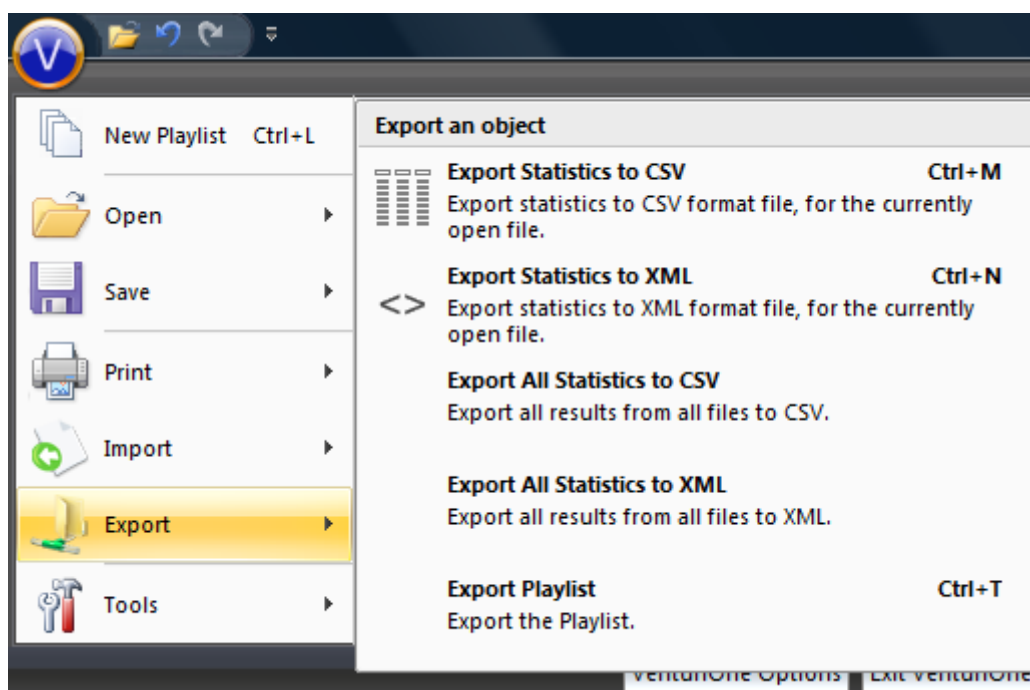


Exporting Results Menu

The **Export** menu contains options for exporting results to a CSV or XML file.



Export Statistics to CSV

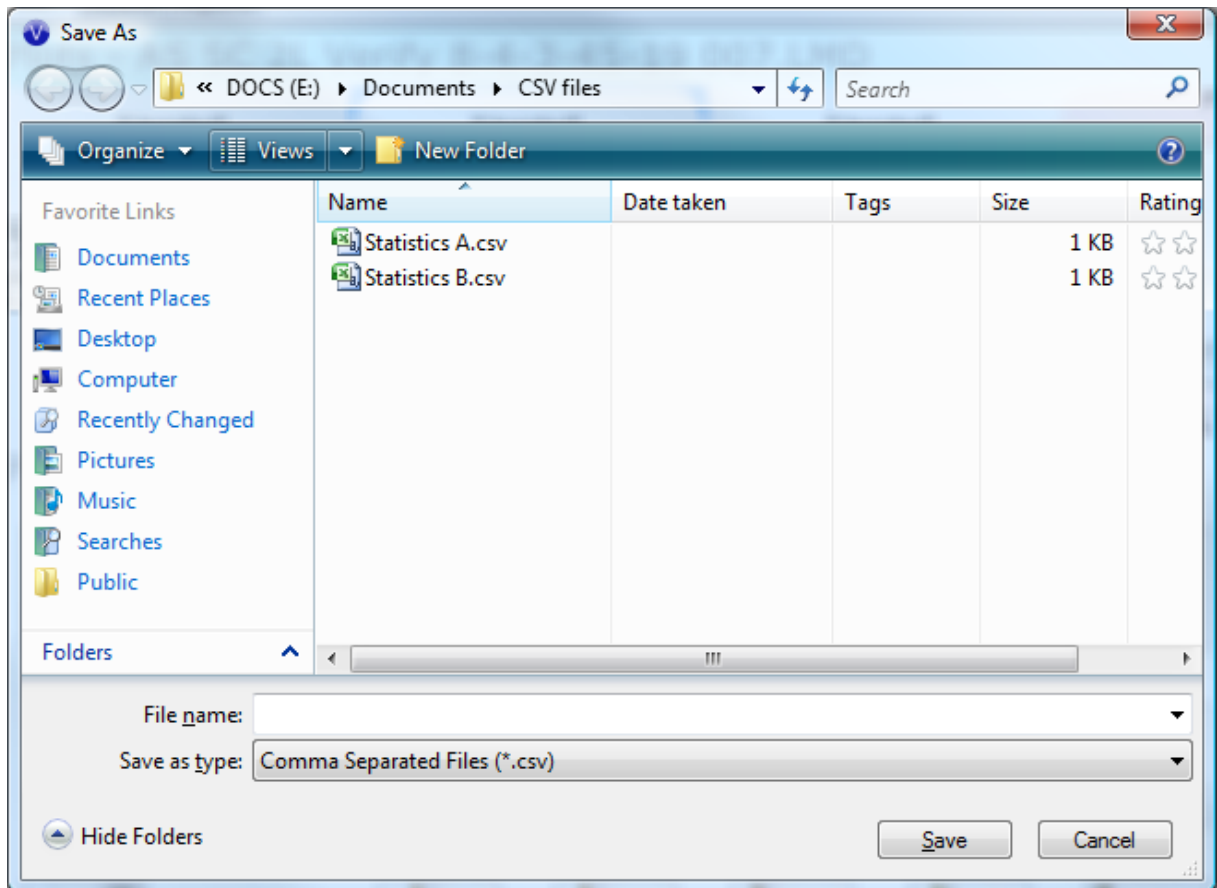
The **Export Statistics to CSV** menu item is only enabled when there are results present in the results table.

Select the **Export Statistics to CSV** menu item (or press the **Ctrl + M** keys) to save a CSV formatted file containing the results of the currently open file only. The results exported to a CSV file are the columns displayed in the results table.

The format of the export is either single row per file or one row per result, depending on the selection in the **VenturiOne Options** dialog.

This CSV formatted file can be opened in Microsoft Excel or similar programs.

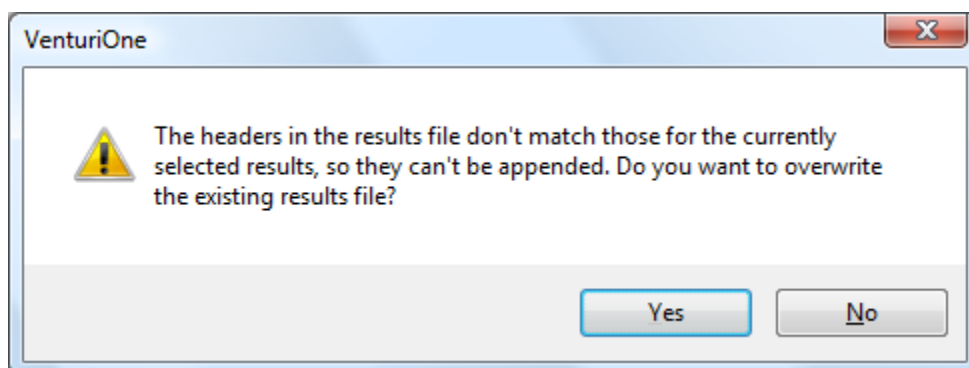
The **Save As** dialog is displayed to allow the assignment of a relevant file name as illustrated below:



If a new file name is entered the results are saved as a CSV file with the selected name.

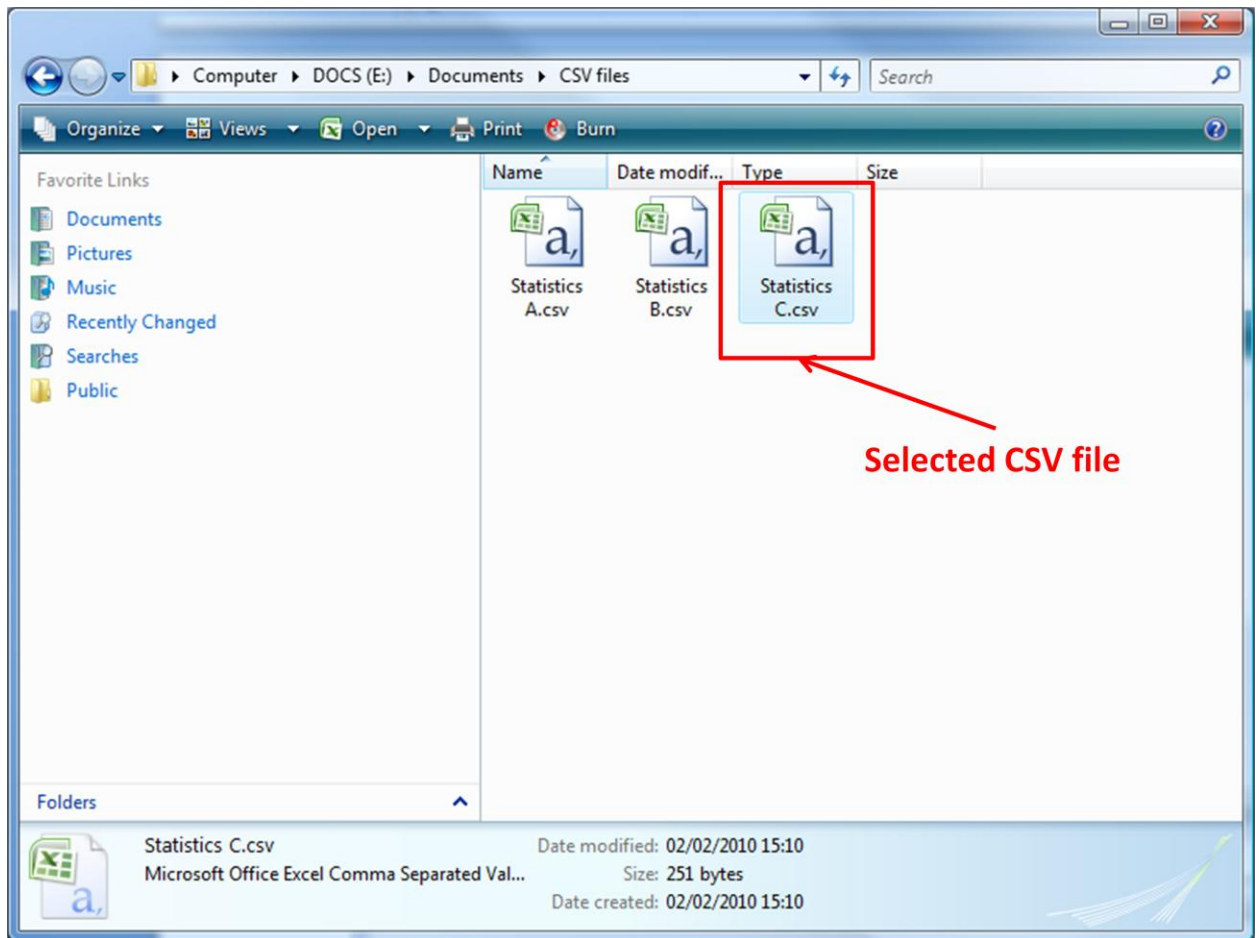
If an existing file name is entered and the format of the exported data matches the formatting of data in the file, the results are appended to those already in the file.

If an existing file name is entered and the headers in the two files do not match, the following message is displayed:



If you click the **No** button the results are not exported. If you click the **Yes** button results are exported and the existing file overwritten.

After the file has been saved Windows Explorer opens with the exported file highlighted:



Click the highlighted file to display the results table in an Excel format.

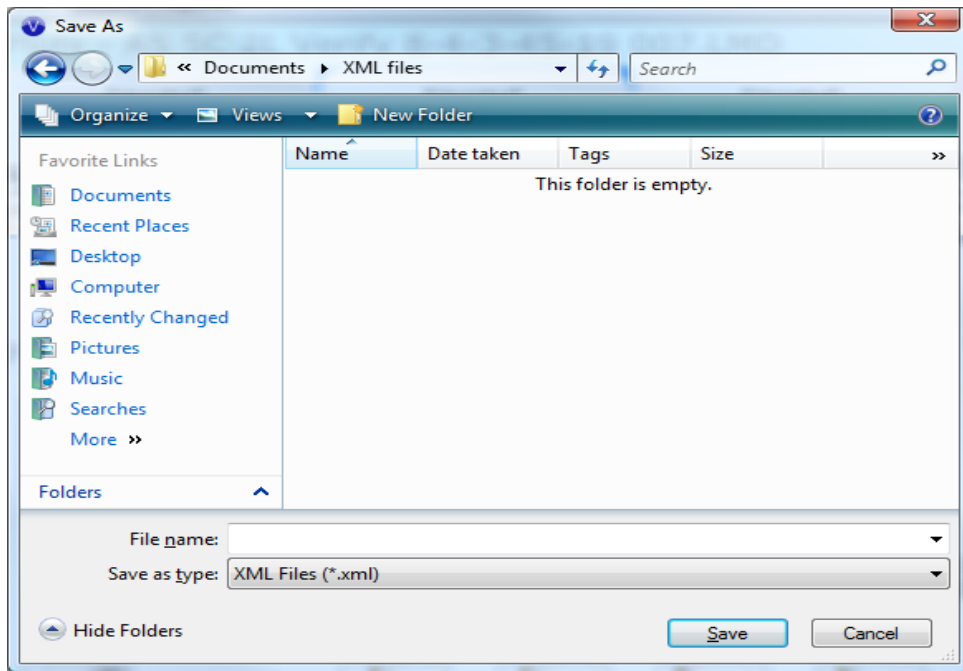
The exported CSV file will include the selected statistics, the LMD file name, workspace file name, user name, compensation matrix, and timestamp.

! When using Microsoft Excel 2003 the maximum number of columns is limited to 256, if the export format in VenturiOne is set to **Single row per file** it is possible to exceed this limit. In this case Excel 2003 will truncate the table at 256 columns. This issue does not occur with Excel 2007. If you need to generate tables with more than 256 columns you should upgrade to Excel 2007.

Export Statistics to XML

Select the **Export Statistics to XML** menu item (or press the **Ctrl + N** keys) to save an XML-formatted file. This exported file can then be opened in a suitable XML viewer (e.g. xmlspy, internet explorer).

The **Save As** dialog is displayed to allow the assignment of a relevant file name as illustrated below:



After saving, open the XML file in a suitable XML viewer (e.g. xmlspy, internet explorer).

The exported XML file will include the full LMD file name (path and name), full workspace file name (path and name), user name, time and date stamp, all the statistics, primary FCS keywords and active compensation values.

If an existing file name is chosen results will be appended.

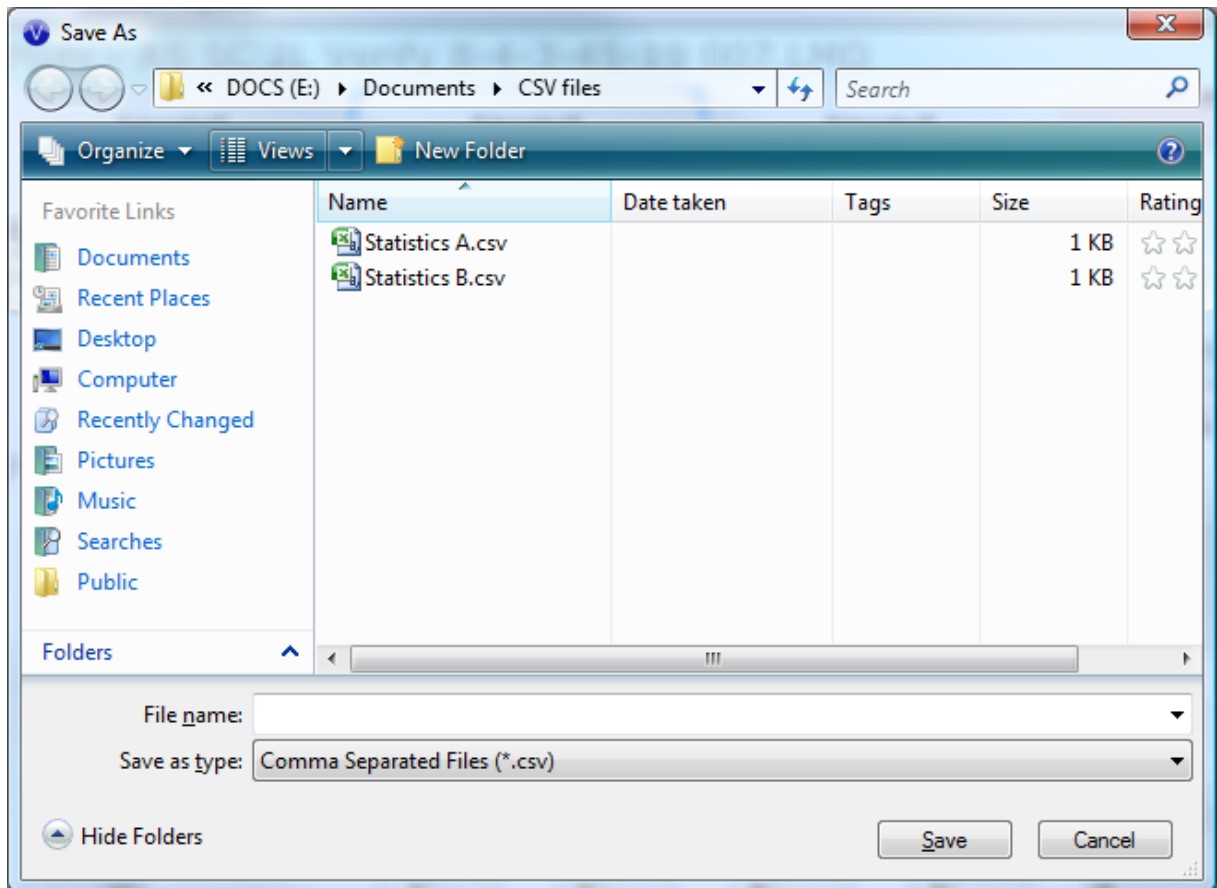
Export All Statistics to CSV

The **Export All Statistics to CSV** menu item is only enabled when there are results in the results table.

Click the **Export All Statistics to CSV** menu item to export results from all files in the **Playlist** to a CSV formatted file.

The format of the export is either single row per file or one row per result, depending on the selection in the **VenturiOne Options** dialog.

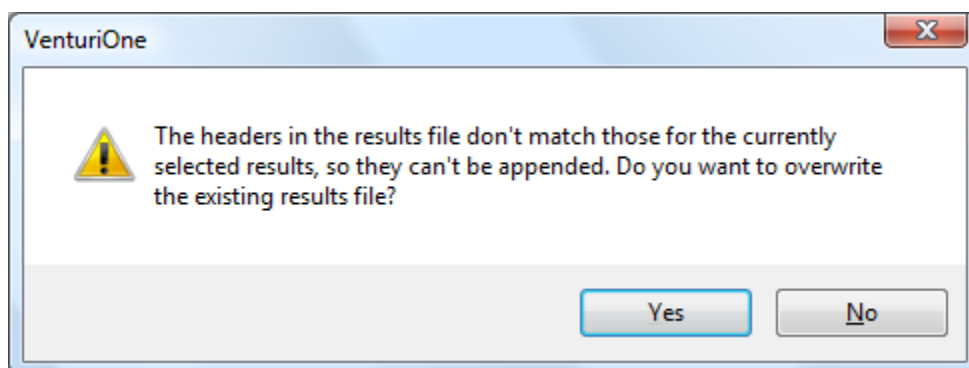
The **Save As** dialog is displayed to allow the assignment of a relevant file name as illustrated below:



If a new file name is entered the results are saved as a CSV file with the selected name.

If an existing file name is entered and the format of the exported data matches the formatting of data in the file, the results are appended to those already in the file.

If an existing file name is entered and the headers in the two files do not match, the following message is displayed:



If you click the **No** button the results are not exported. If you click the **Yes** button results are exported and the existing file overwritten.

After the file has been saved, Windows Explorer opens with the exported file highlighted.

Click the highlighted file to display the results table in an Excel format.

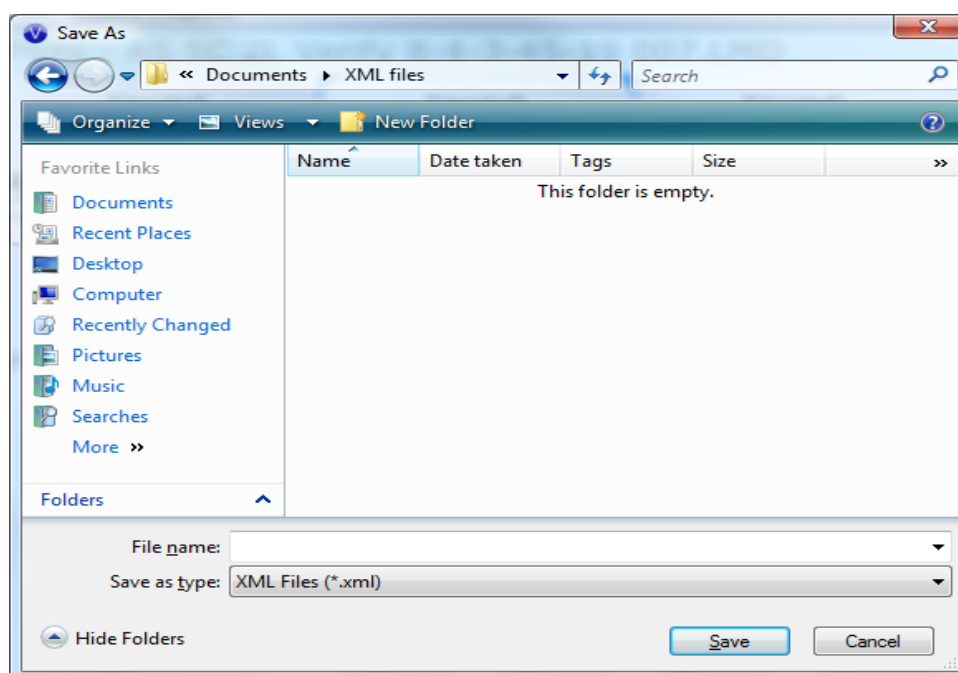
The exported CSV file will include the selected statistics, the LMD file name, workspace file name, user name, compensation matrix, and timestamp.

! When using Microsoft Excel 2003 the maximum number of columns is limited to 256, if the export format in VenturiOne is set to **Single row per file** it is possible to exceed this limit. In this case Excel 2003 will truncate the table at 256 columns. This issue does not occur with Excel 2007. If you need to generate tables with more than 256 columns you should upgrade to Excel 2007.

Export All Statistics to XML (Ctrl + Shift + N)

Click the **Export All Statistics to XML** menu item to export results from all files in the **Playlist** to an XML file.

The **Save As** dialog is displayed to allow the assignment of a relevant file name as illustrated below:



After saving, open the XML file in a suitable XML viewer (e.g. xmlspy, internet explorer).

The exported XML file will include the full LMD file name (path and name), full workspace file name (path and name), user name, time and date stamp, all the statistics, primary FCS keywords and active compensation values.

If an existing file name is chosen results will be appended.