

## Snapshot Overlays

In VenturiOne you can create **Snapshot Overlays** of single parameter histograms to compare the same plot on different samples.

The **Snapshot Overlay** group contains controls for creating and editing Snapshot Overlays.

Snapshots can only be compared when all LMD files have the same workspace or workspaces created from the same workspace. Snapshots will not appear on plots added after the snapshot is taken.

Snapshots of DNA plots with Cell Cycle Analysis enabled cannot be taken.



Snapshot overlays are created on a per **Playlist** basis but cannot be saved with the workspace or the playlist files.

### New Snapshot

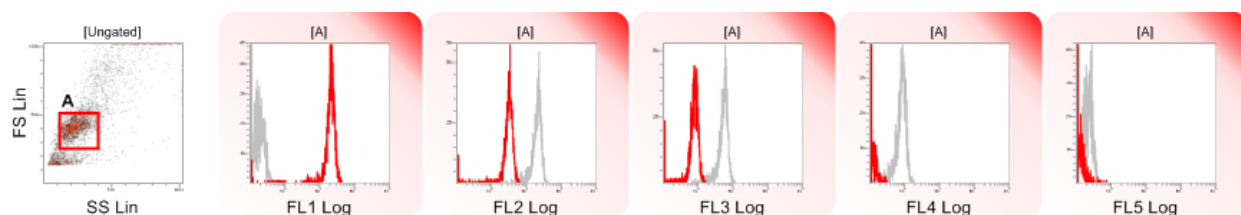
To create a snapshot, select the **New Snapshot** button.

You can create up to 8 snapshots per **Playlist**. Once 8 snapshots are created, the **New Snapshot** button becomes disabled.

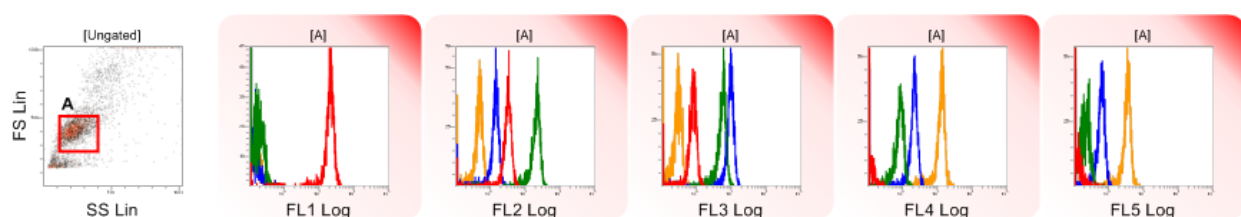
Each newly created snapshot is designated a unique name, consisting of a unique number (1-8 inclusive), followed by a colon and the name of the relevant file.

There are a set of 10 predefined snapshot colors within the software. When a new snapshot is taken it is automatically assigned one of those colors.

When you select the **New Snapshot** button the outline of all single parameter histogram plots in the current workspace will be captured. This outline will remain in place when you load a subsequent file, allowing you to overlay the captured snapshot with a new file, as shown below:



You can repeat the procedure pressing the **New Snapshot** button as each new file is loaded to capture up to 8 snapshots at one time.



## Snapshot Name Combo Box

The **Snapshot Name** combo box displays the name of the current snapshot. The drop down list of the combo box is populated with the names of all the available snapshots. You can select a different snapshot from the drop down list.

The default name for a snapshot is the name of the current LMD file. You can change the name of the current snapshot by typing a new name in the **Snapshot Name** combo box.

The entered name cannot be blank and can contain up to 53 characters; the name cannot contain consecutive spaces. If these rules are violated an appropriate error message is displayed.

## Snapshot Color Combo Box

The **Snapshot Color** combo box displays the color of the current snapshot. To change the color click the arrow to display the color control illustrated below, then select the desired new color.



## Delete Snapshot Button



To delete a snapshot select it in the **Snapshot name** combo box and press the **Delete Snapshot** button. The snapshot will be deleted from the histogram plots and in the **Snapshot name** combo box.

When a snapshot is deleted, the remaining snapshots are not re-ordered. The space left by the deleted Snapshot can be occupied by a new snapshot.

## Move Snapshot Up and Buttons



## Move Snapshot Down



You can change the order in which the snapshot overlays are displayed on the histogram plots. To bring a snapshot forward on the overlay plot you need to move the snapshot up the list, to send an snapshot backwards you need to move snapshot down the list using the **Move Snapshot Up** and **Move Snapshot Down** buttons.