

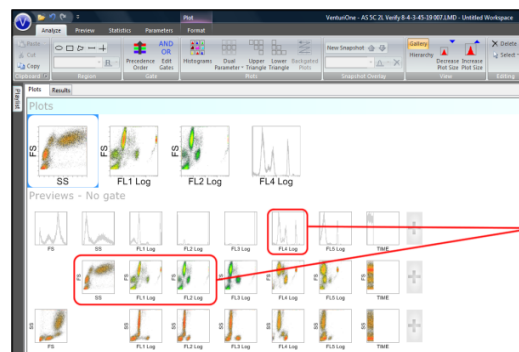
VenturiOne Quick Analysis Guide

Opening a File

On opening an LMD file into the VenturiOne Application Window, preview plots displaying all parameters are automatically laid out in the **Previews** area of the Workspace.

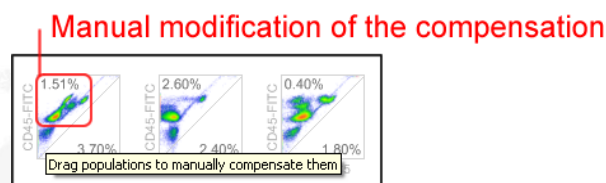
Selection of Plots

To analyze and modify the preview plots, add the desired plots to the **Plots** area by double clicking on the plots of choice.



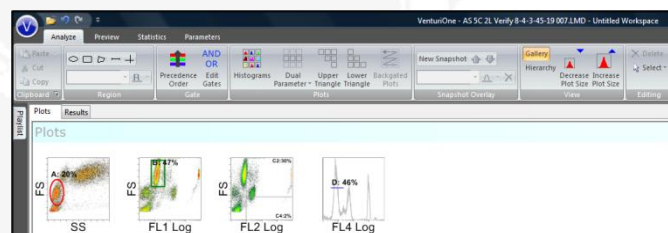
Manual Compensation

Enable the manual compensation and click on the selected population within the preview plot and drag to the desired position. All plots are updated automatically in real time.



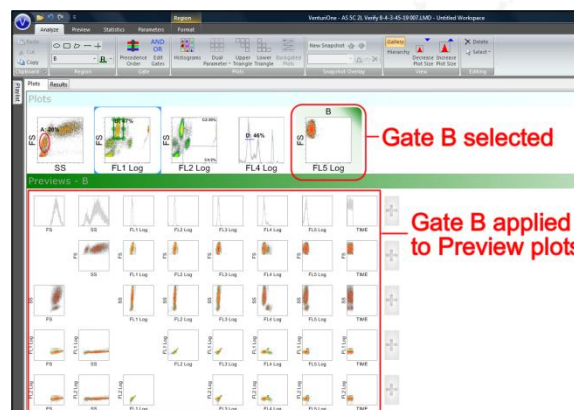
Region Creation

Regions are created from the **Region** group located on the ribbon. The region orientation, size and placement can be edited by dragging the handles displayed on the selected regions.



Gating

Click on an individual region or gated plot to apply this gate to all the plots in the **Previews** area.

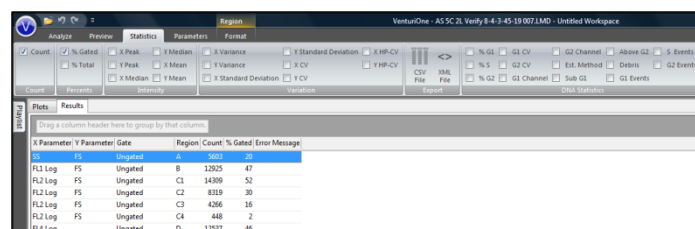


Results

Click the **Results** tab, positioned below the ribbon, to display the generated statistics.

Exporting

To export the plots, copy and paste into the desired software package.



Export the statistics via the creation of CSV or XML files.